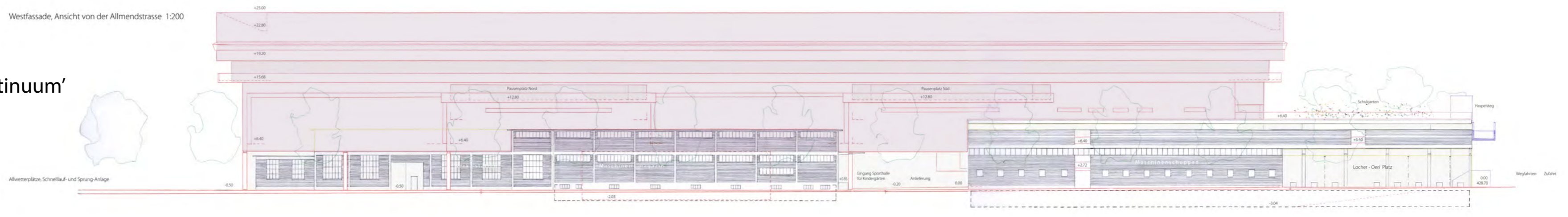


Gebäudefläche neu GF 12'809m²

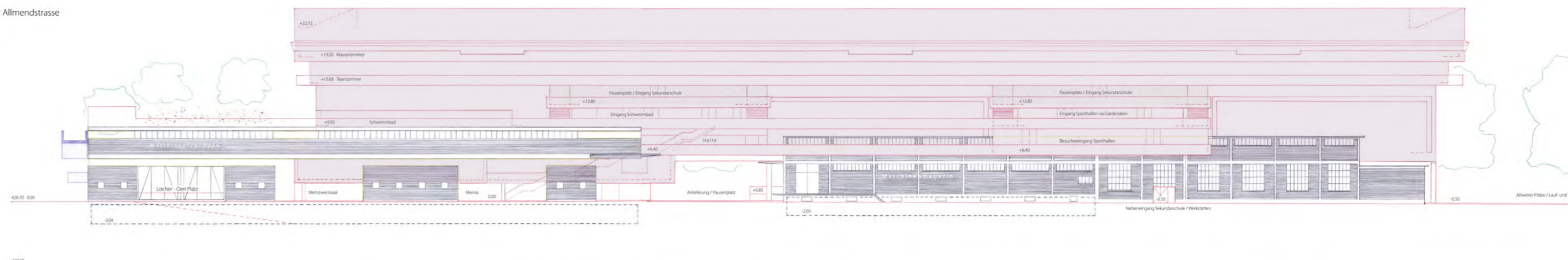
Aussengeschossfläche neu AGF 1'481m²

Gebäudevolumen neu GV 52'908m³

Westfassade, Ansicht von der Allmendstrasse 1:200

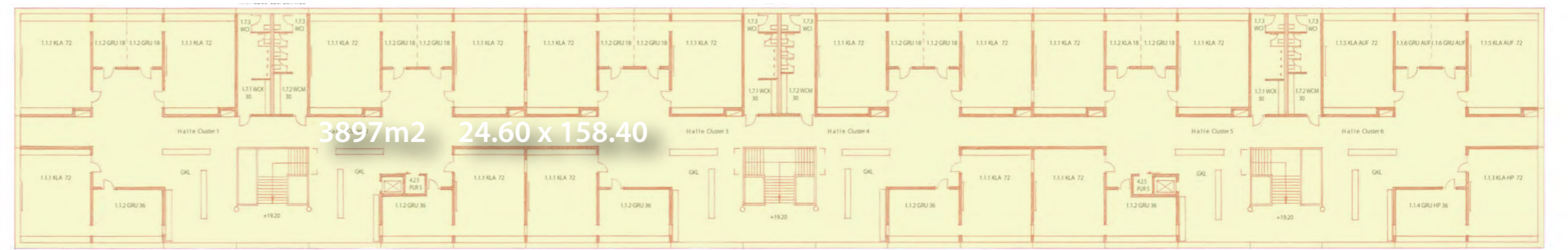


Westfassade, Ansicht von der Allmendstrasse



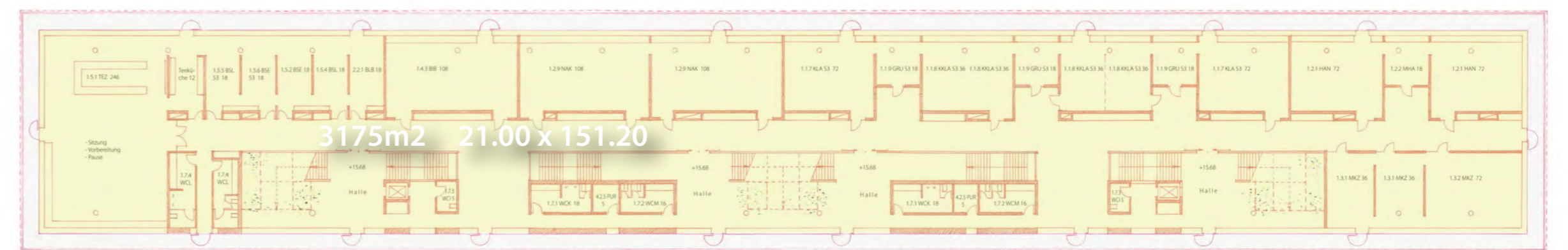
Grundriss 5. Obergeschoss +19.20 447.90

3897m²



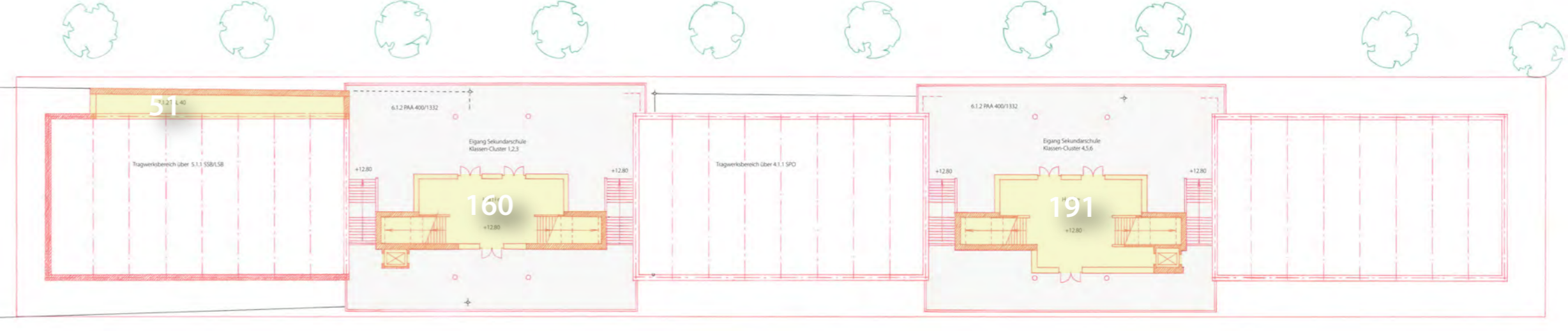
4. Obergeschoss +15.68 444.38

3175m²

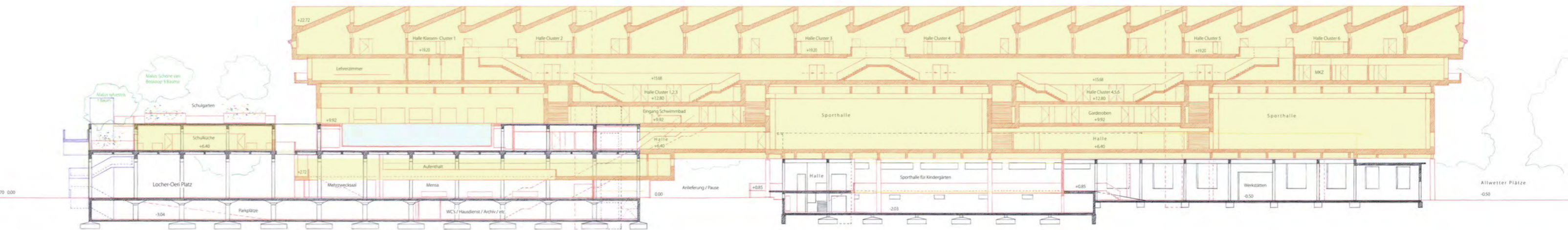


3. Obergeschoss +12.80 441.50

402m²

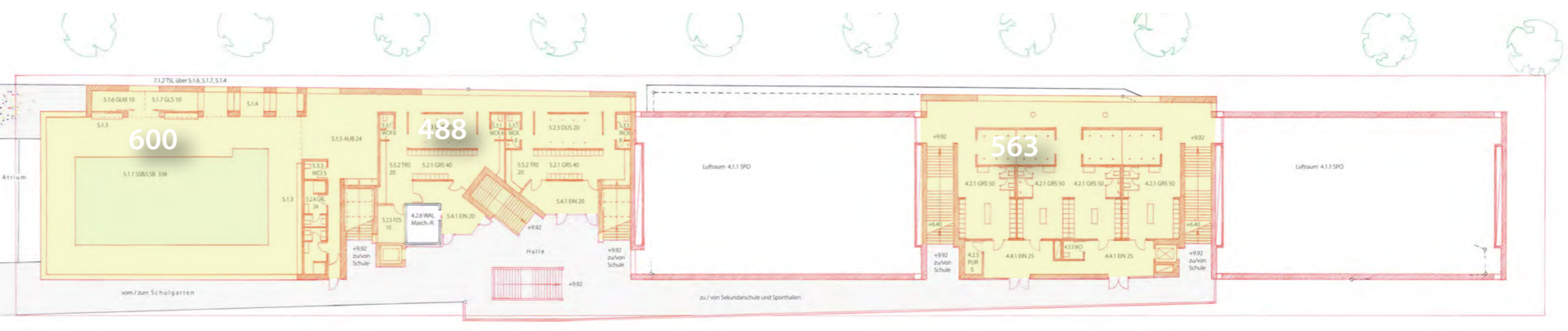


Längsschnitt



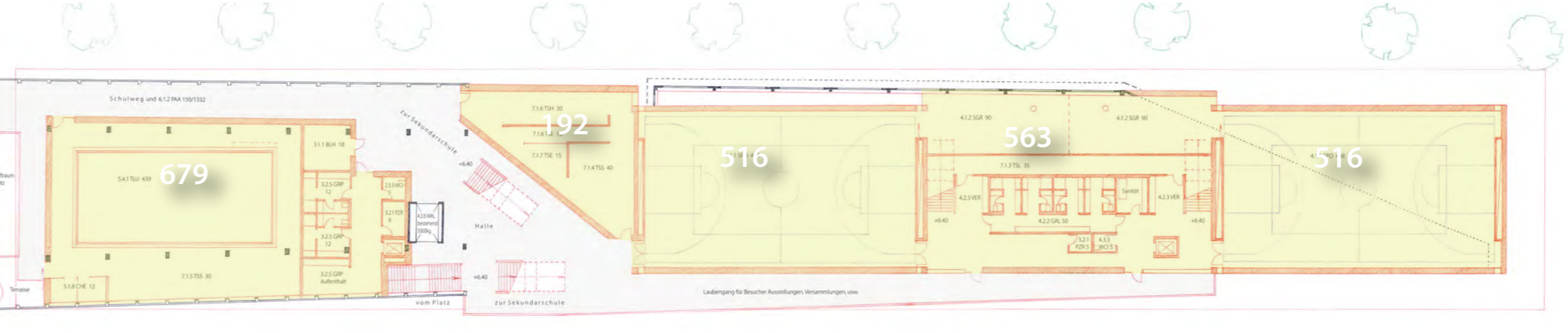
2. Obergeschoss +9.92 438.62

1651m²



1. Obergeschoss +6.40 435.10

2828m²

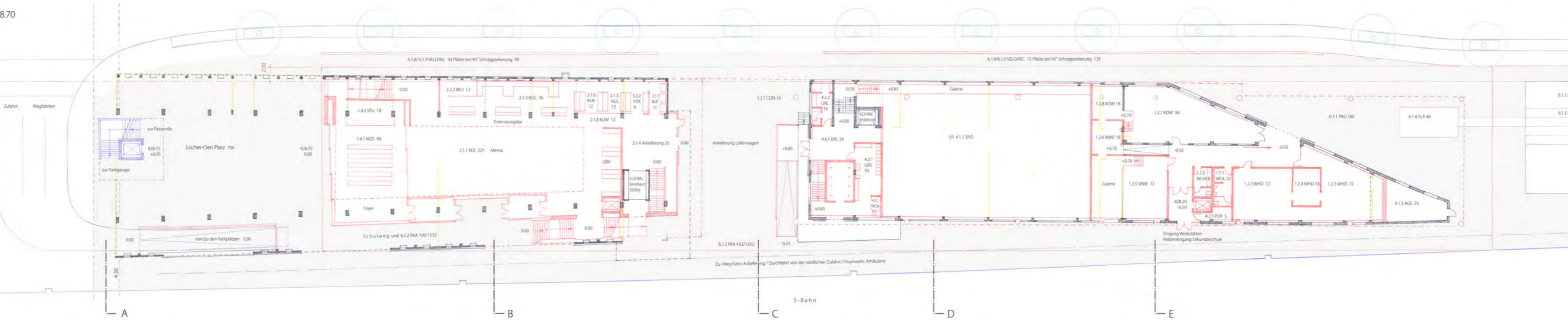


Mezzanin, Zwischengeschoss +2.72 431.42

853



Erdgeschoss 0.00 428.70



Untergeschosse -3.04 425.66

