

Carmen

Street-level views, area 1 Nousias Tannery

area 2 Porto Palace and Benis Tannery

area 2 Porto Palace south

Firmitas - consistency, firmness, stability, etc.
Utilitas - flexibility, functionality, utility, etc.
Venustas - attractiveness, delight, beauty, etc.

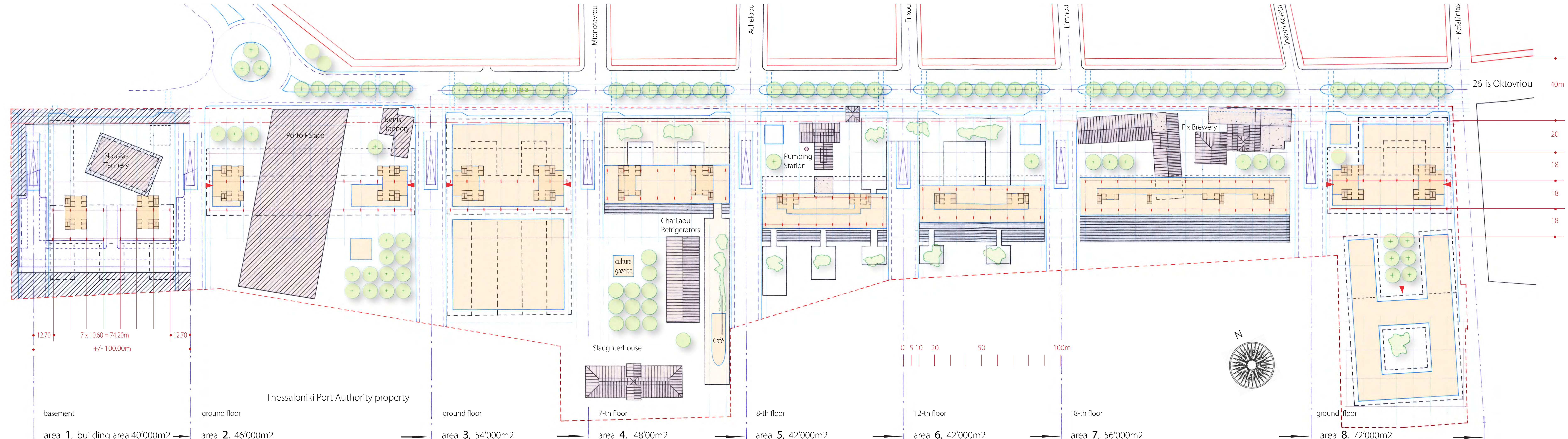
This 'eternal' design criterion also stands behind the project 'Carmen', for the New Central Business District of Thessaloniki, to put things in order again.

The vertical rhomboid prisms and their intersection with the lower, rectangular prisms, create, together with the preserved historical buildings, new streets (in continuation of the existing ones), and they create a variety of new spaces like piazzas, court yards, patios, etc.

The typical space type in the vertical structures have a minimum clear ceiling height of 3.00m and a minimum span of 10.00m. This allows for classrooms, laboratory, office, resident, service- and many other (non polluting) activities and, you don't have to worry about energy issues. 'Carmen' is an independent, self-sufficient power plant, there is abundant energy production as shown on the second sheet of this presentation. The project is a temporary interpretation of firmitas, utilitas and venustas.

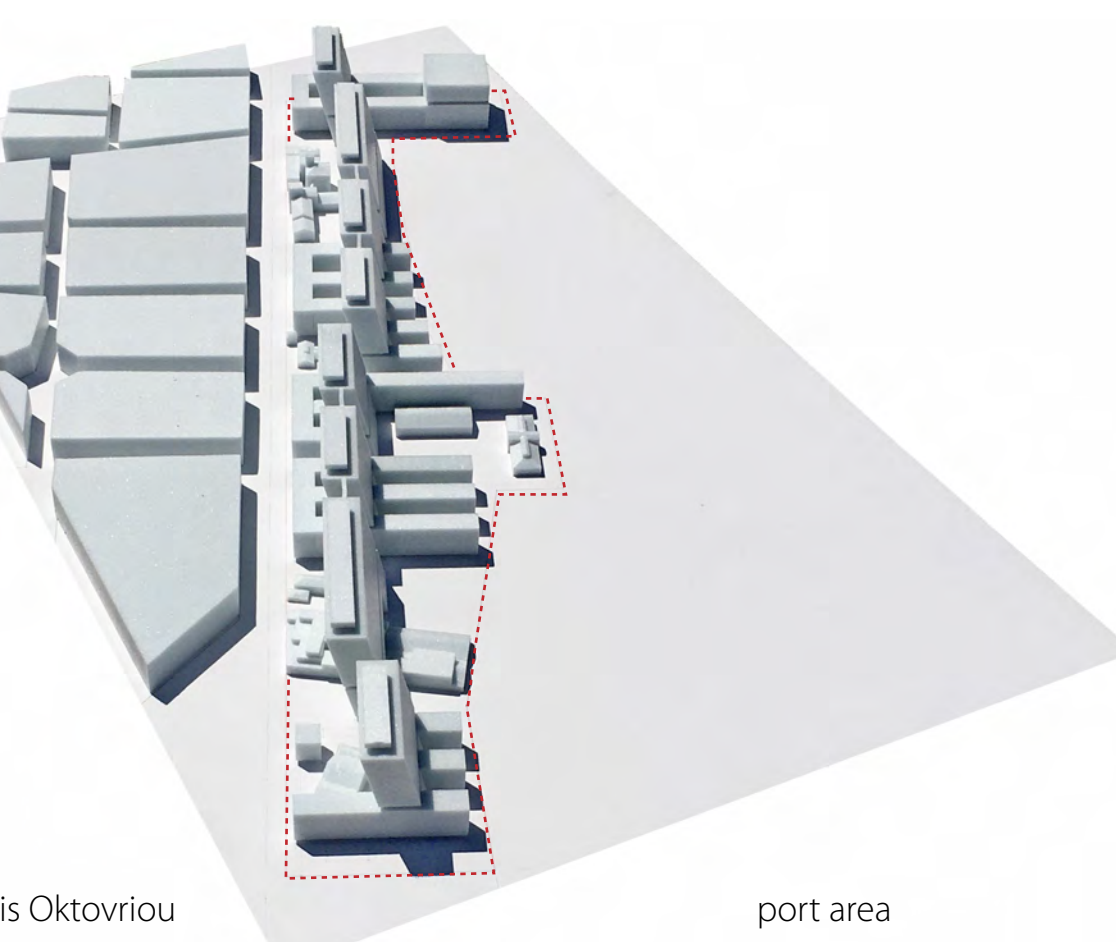
Site layout 1: 1000 scale
Total 'building area' 400'000m²

'building areas' by 'site-areas'



8 vertical rhomboid-prisms, each 72m high, in east-west direction, intersecting with horizontal prisms of 27m height.

Model 1: 500 scale



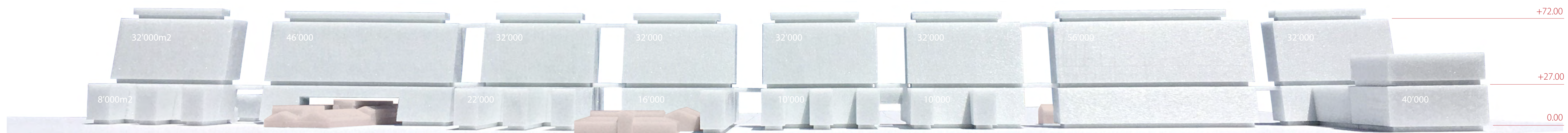
sea - side view

Porto Palace

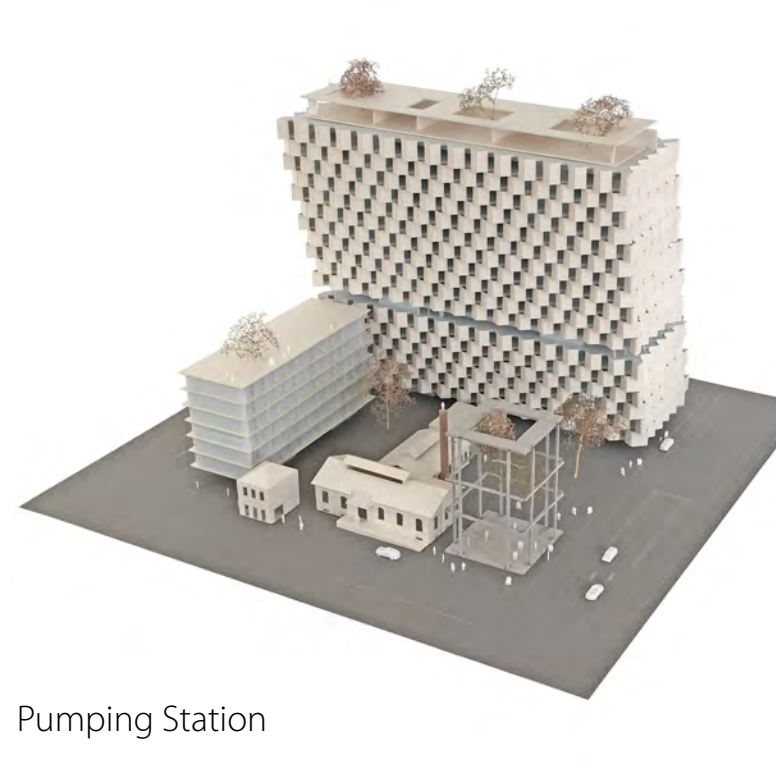
Slaughterhouse and Charilaou Refrigerators

Fix Brewery (behind new building)

university



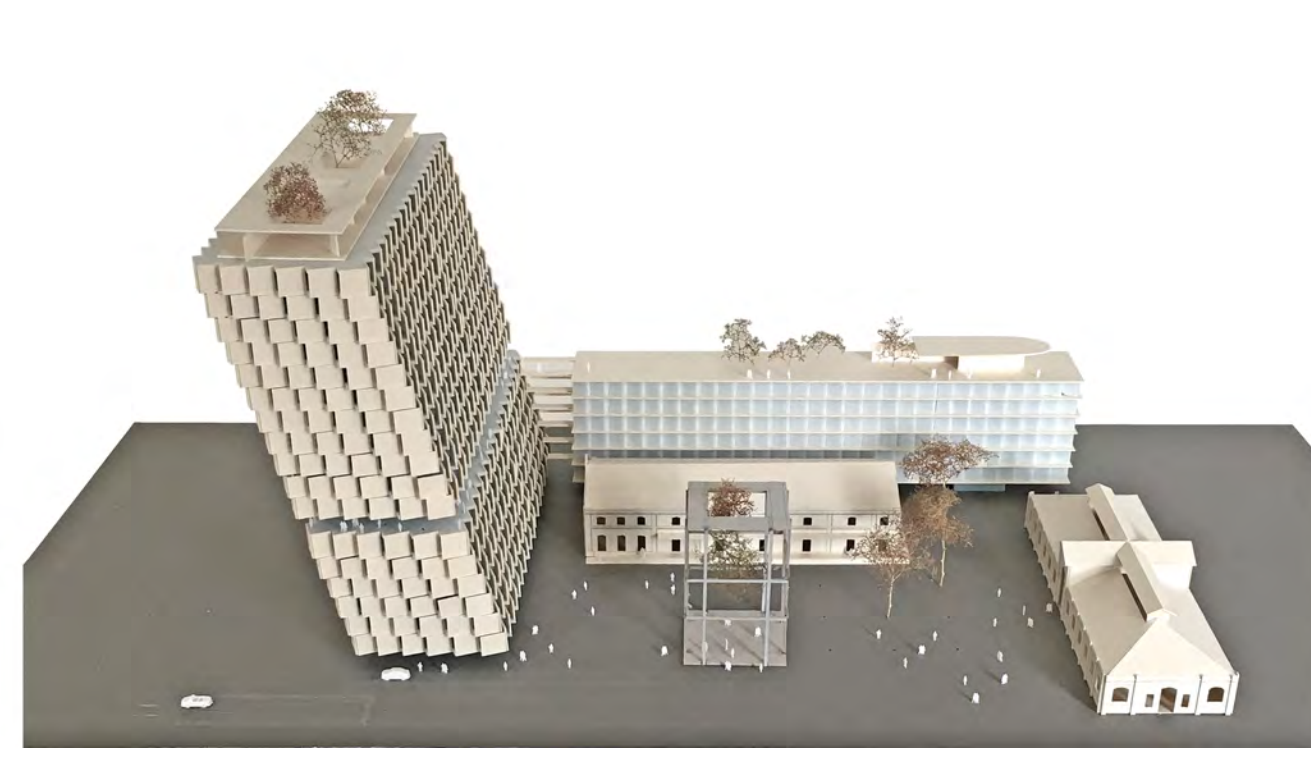
Drone views Fix Brewery



Pumping Station



Slaughterhouse and Charilaou Refrigerators



sheet 1 of 2



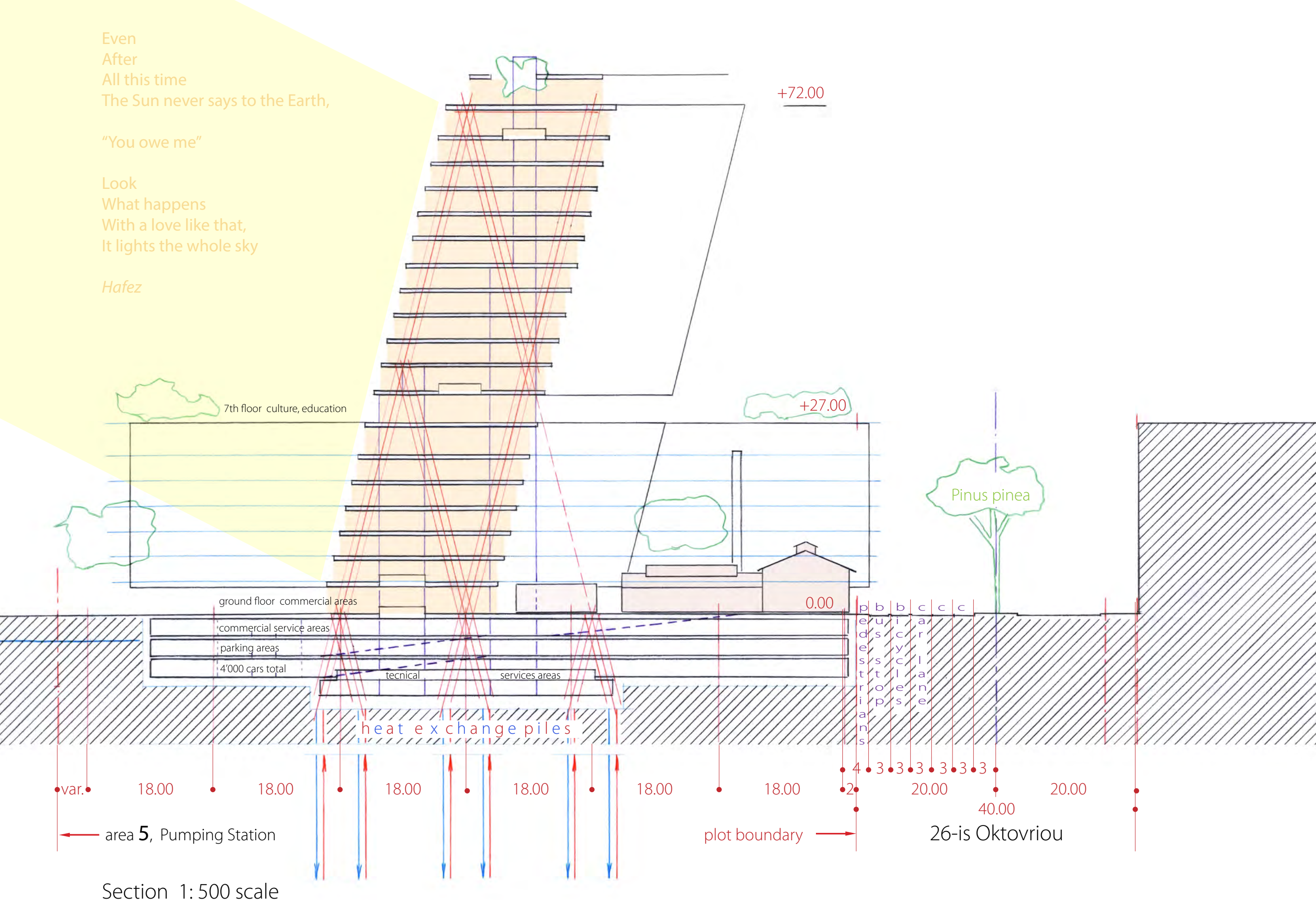
Carmen

area 4 Charilaou Refrigerators and Slaughterhouse

area 5 Pumping Station

area 7 Fix Brewery

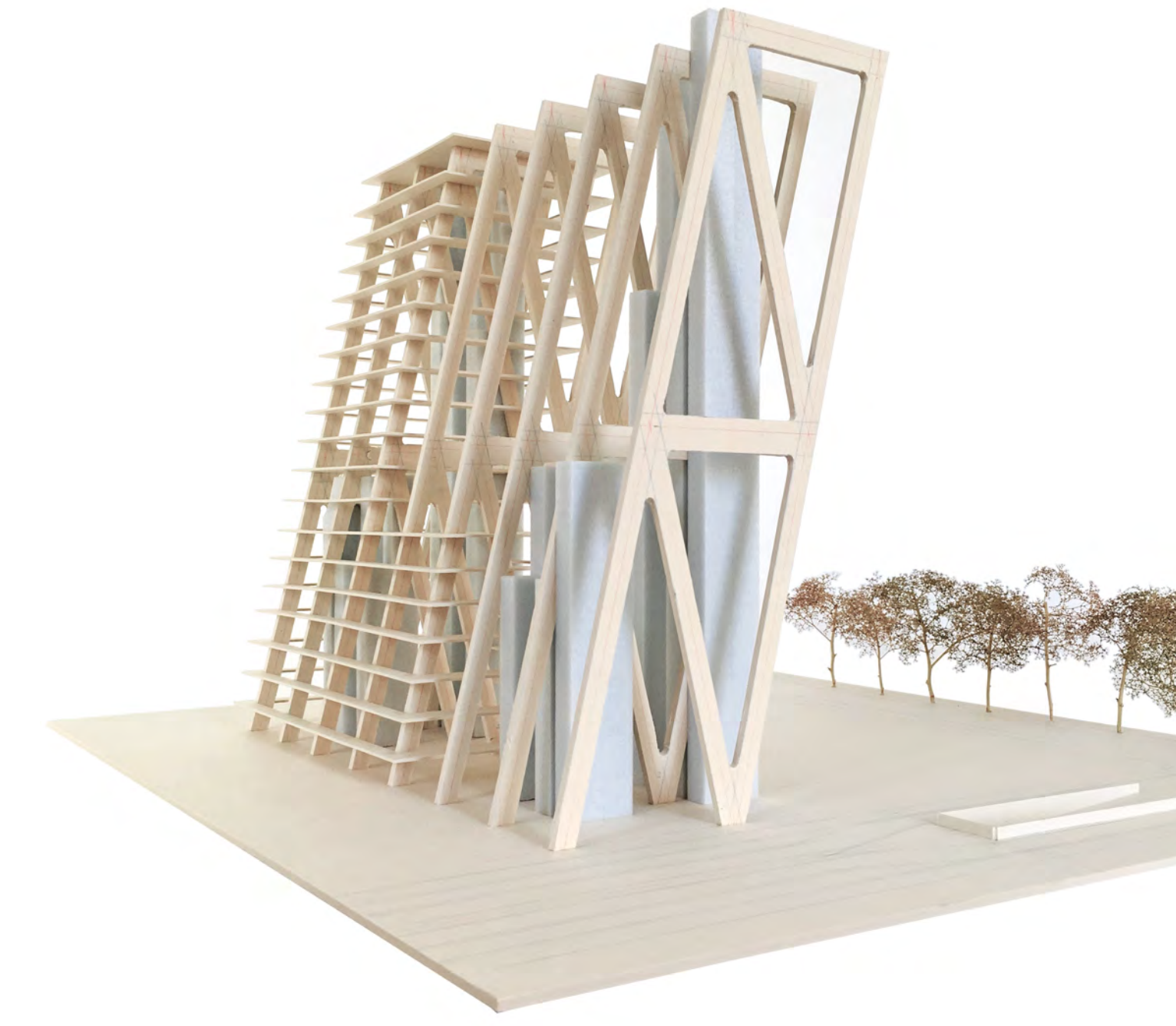
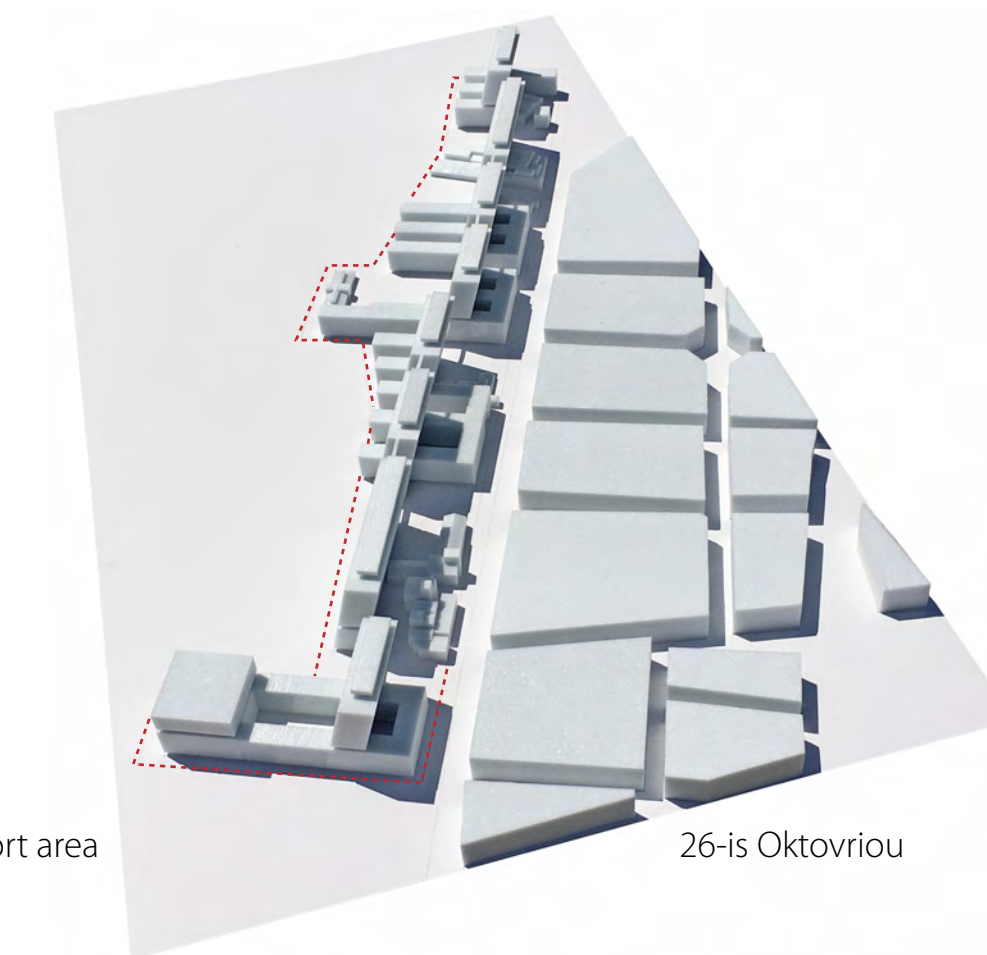
gazebos as cultural common spaces - designed by ALTH - school of architecture, built with recycled material of existing structures on the ground



Section 1: 500 scale

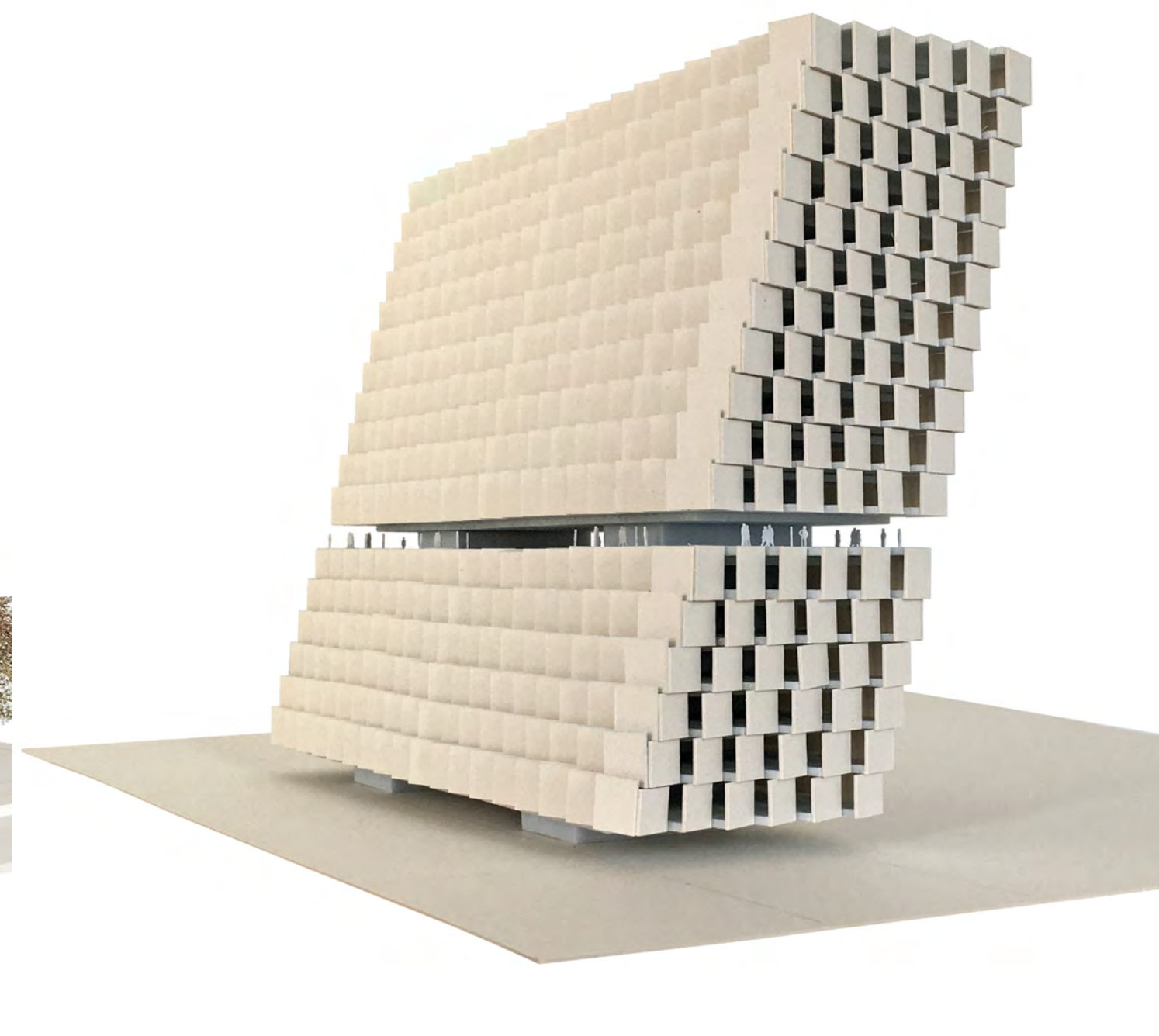
The earth would not be as unique, a planet equipped with an ecosystem, if the sun didn't keep supplying it with energy.

Harvesting and processing of geothermal energy and sunlight will heat, cool and power the spaces of the various activities, extending over an area of about 400'000m².



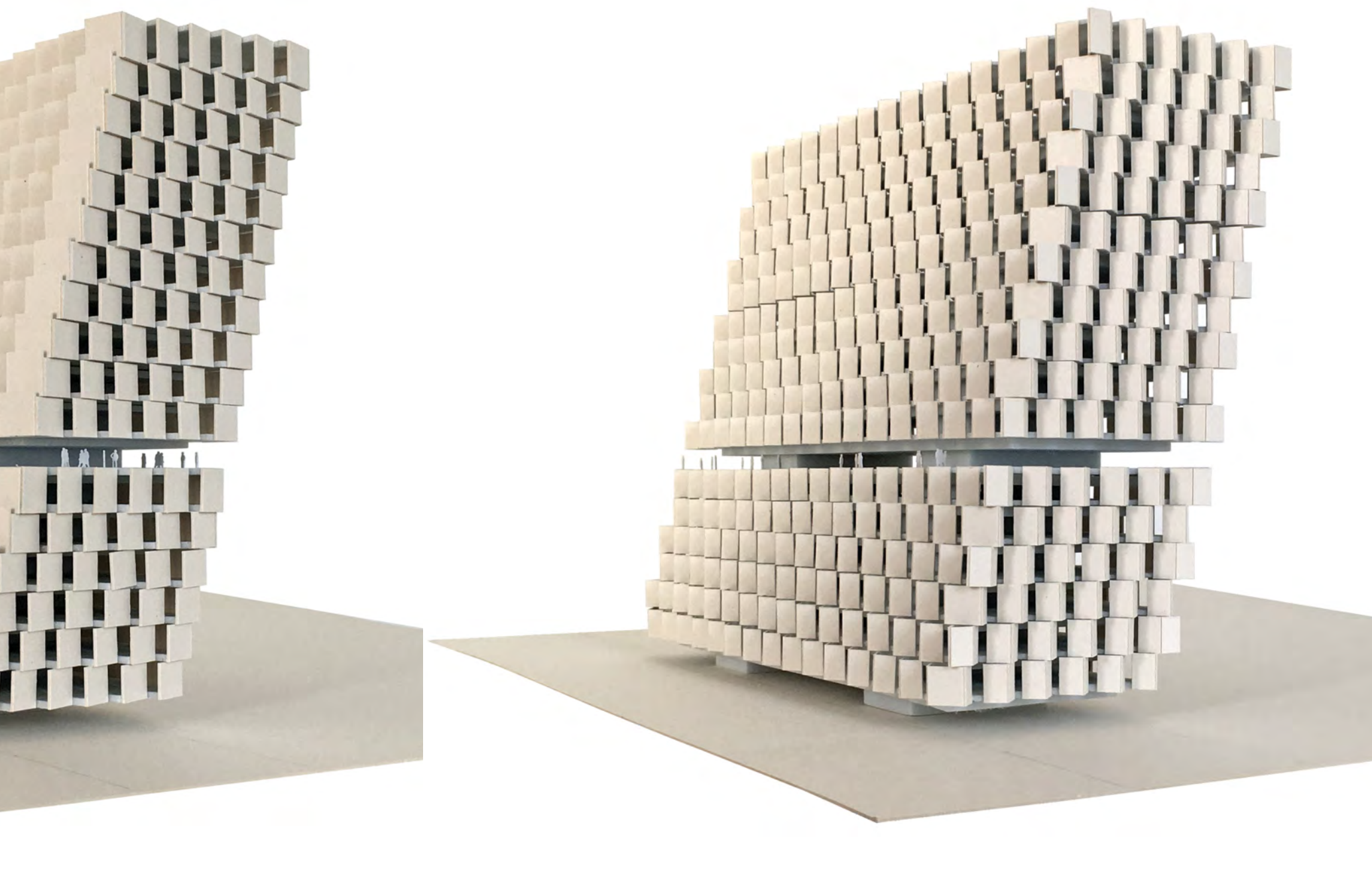
8 of 74 equal main frames (including vertical circulation and partial flooring)

Vertical rhomboid prism - structure



Selection of three basic configurations of photovoltaic panels that allow for maximum harvest of electrical energy

Menu of building envelopes



'quarry' type

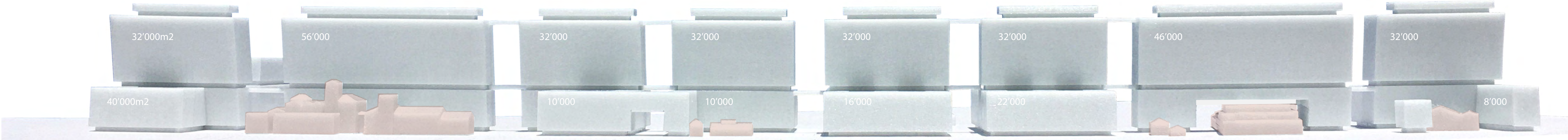


'rhomboid' type



landscaping on ground floor, 7-th floor and roof top

'ribbon' type



26-is Oktovriou

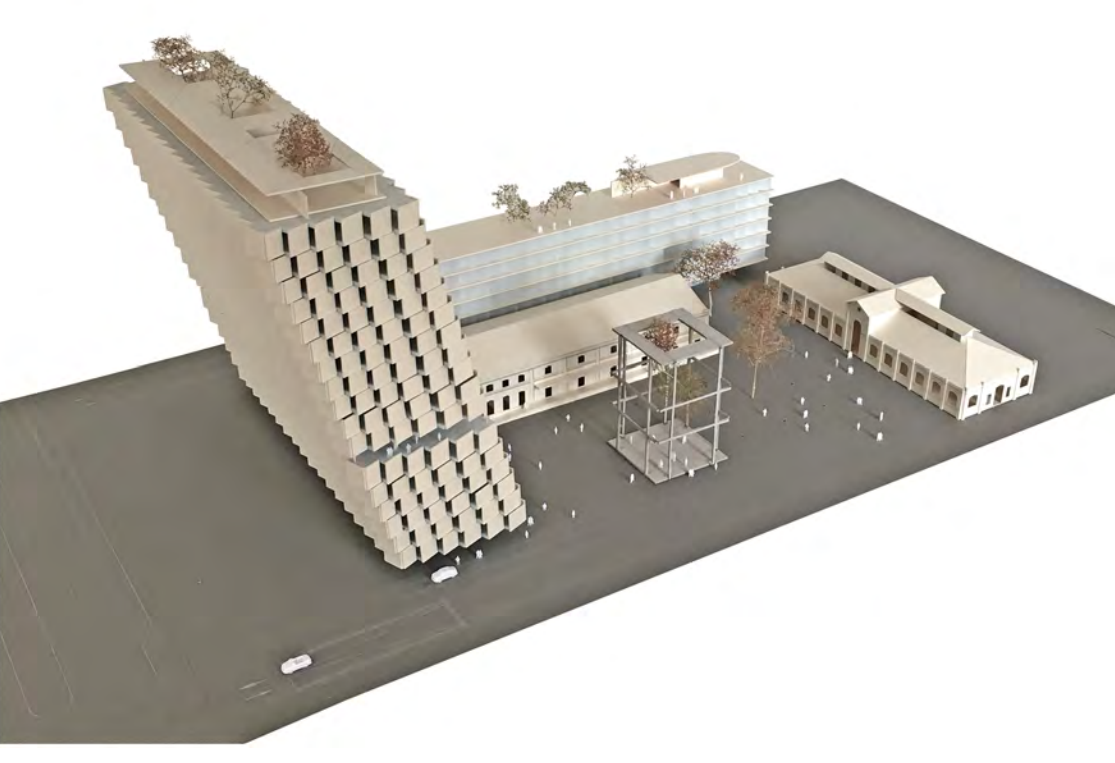
Fix Brewery

Pumping Station

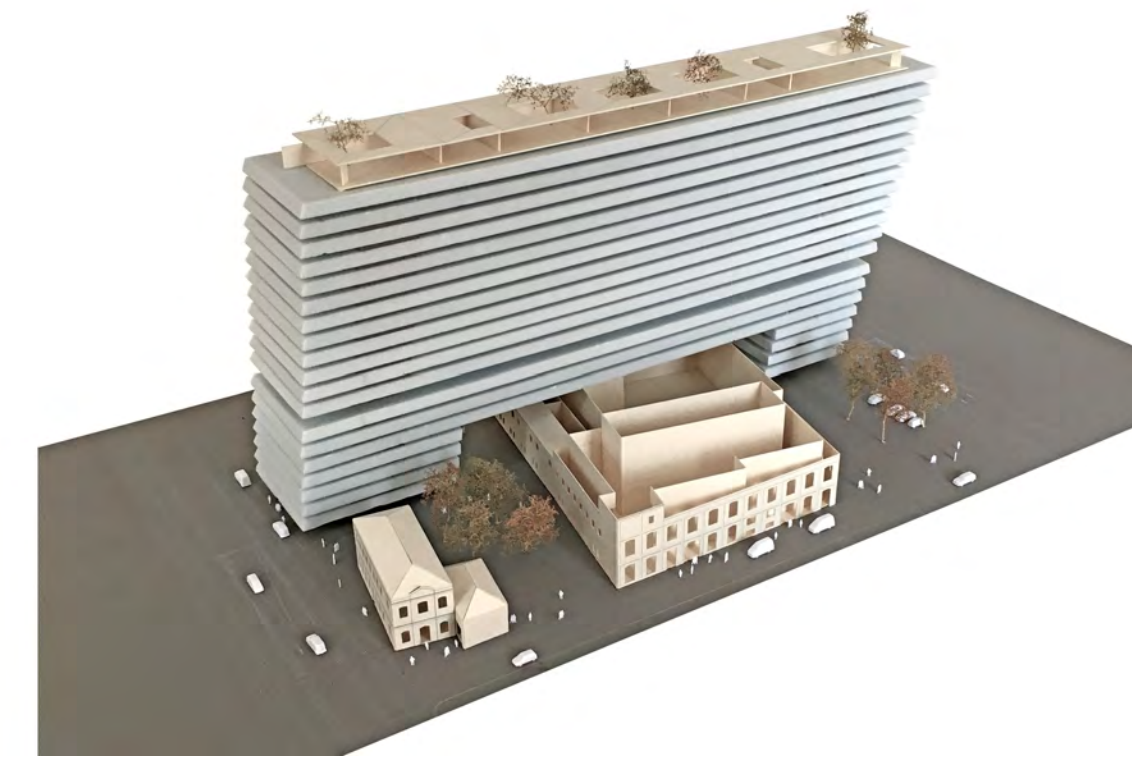
Benis Tannery

Porto Palace

Nousias Tannery



Porto Palace



Nousias Tannery



sheet 2 of 2

ArXellence 2, Architectural Ideas Competition, Thessaloniki, Greece

ArXellence 2, Architectural Ideas Competition, Thessaloniki, Greece