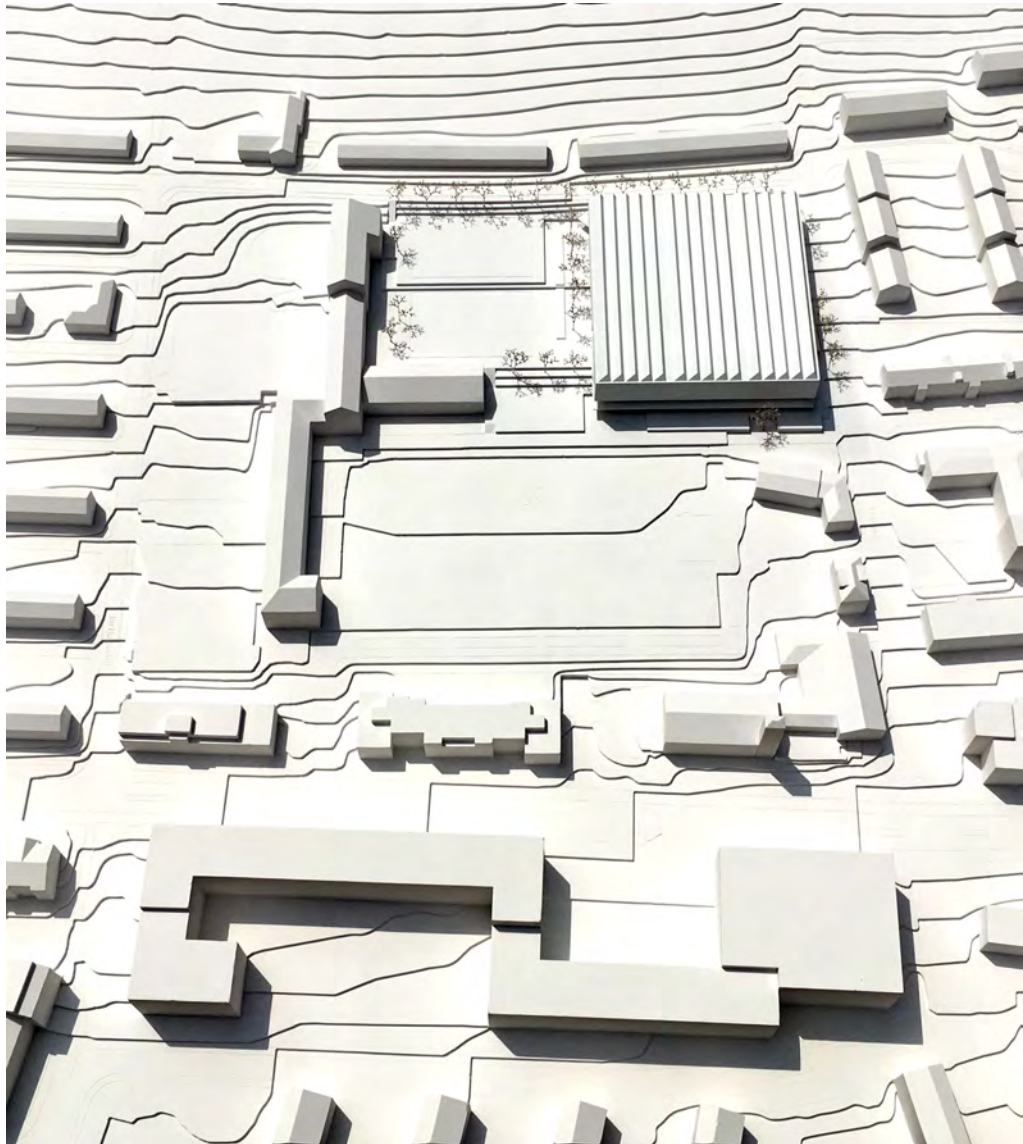


GF 15'141m<sup>2</sup> / GV 67'075m<sup>3</sup>



# GF 3. Obergeschoss 4600m<sup>2</sup>

Fluchtwegkonzept nicht Teil des WW-Programms

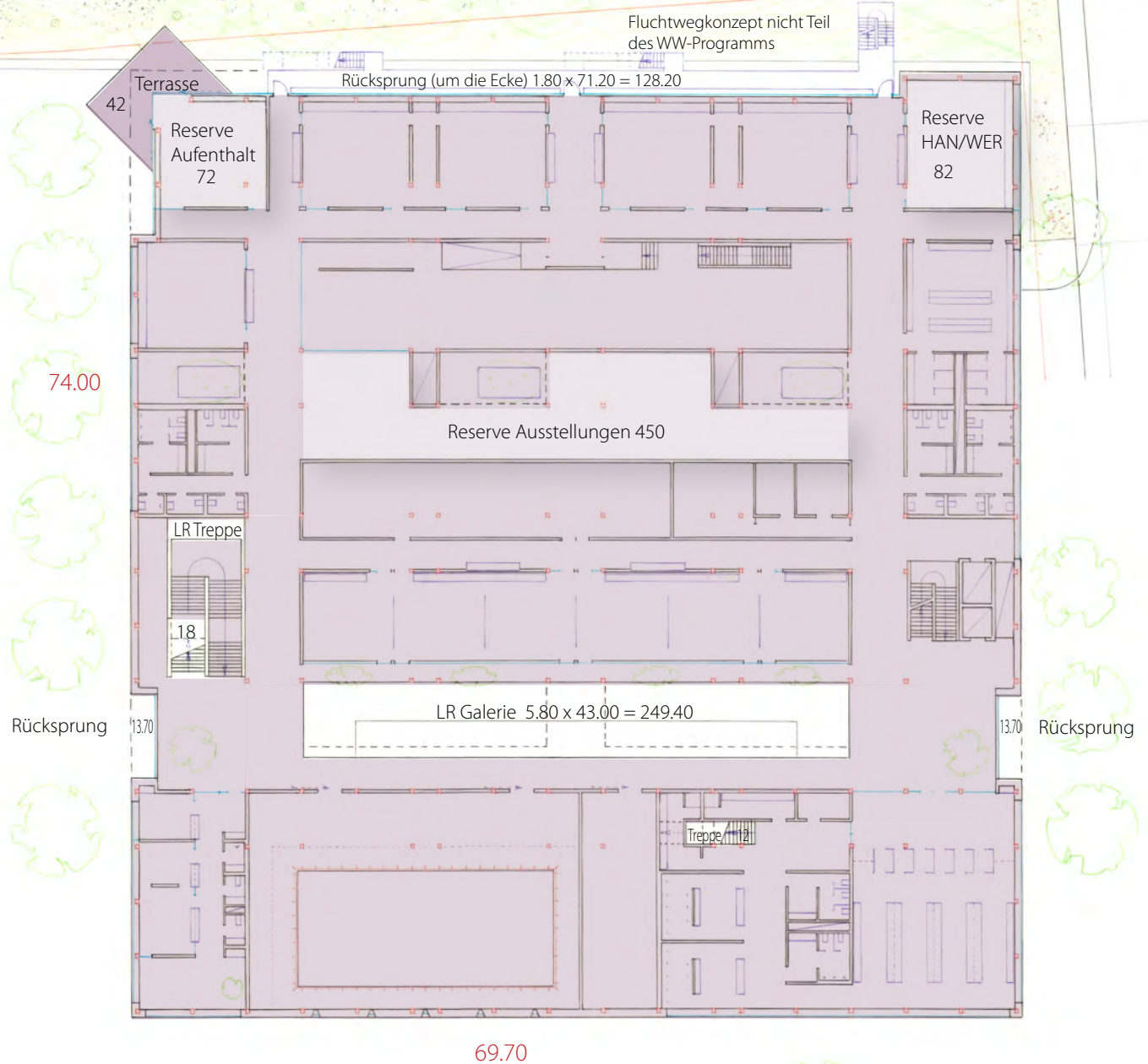


Gebäudeaussenkanten 74.00m x 69.70m = 5157.80m<sup>2</sup>

- Schächte 6 x 7.40 = 44.40
- Atrien 3 x 33.20 = 99.60
- LR Treppen = 40.00
- LR Galerie 2 x 96.70 = 193.50
- Schwimmbecken 9.00 x 20.00 = 180.00

4600.30m<sup>2</sup>

GF 2. Obergeschoss 4542m<sup>2</sup>

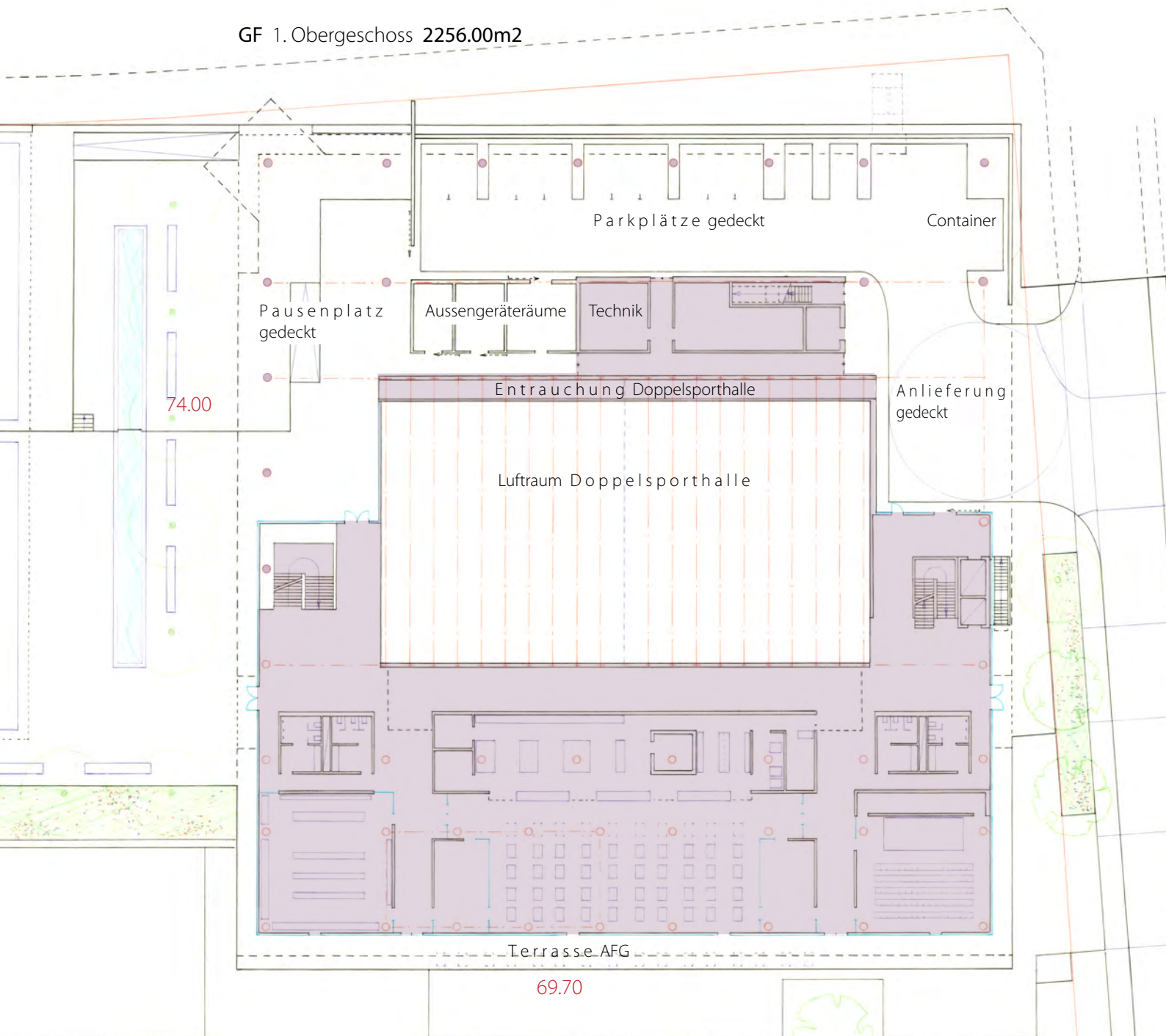


Gebäudeaussenkanten  $74.00\text{m} \times 69.70\text{m}$  = 5157.80m<sup>2</sup>

- Rücksprünge	= 155.60	
- LR Treppen	= 30.00	
- LR Galerie $5.80 \times 43.00$	= 249.40	
- Reserveflächen 604m <sup>2</sup> , nicht ausgebaut, 30% davon	= 181.20	4541.60m <sup>2</sup>



GF 1. Obergeschoss 2256.00m<sup>2</sup>

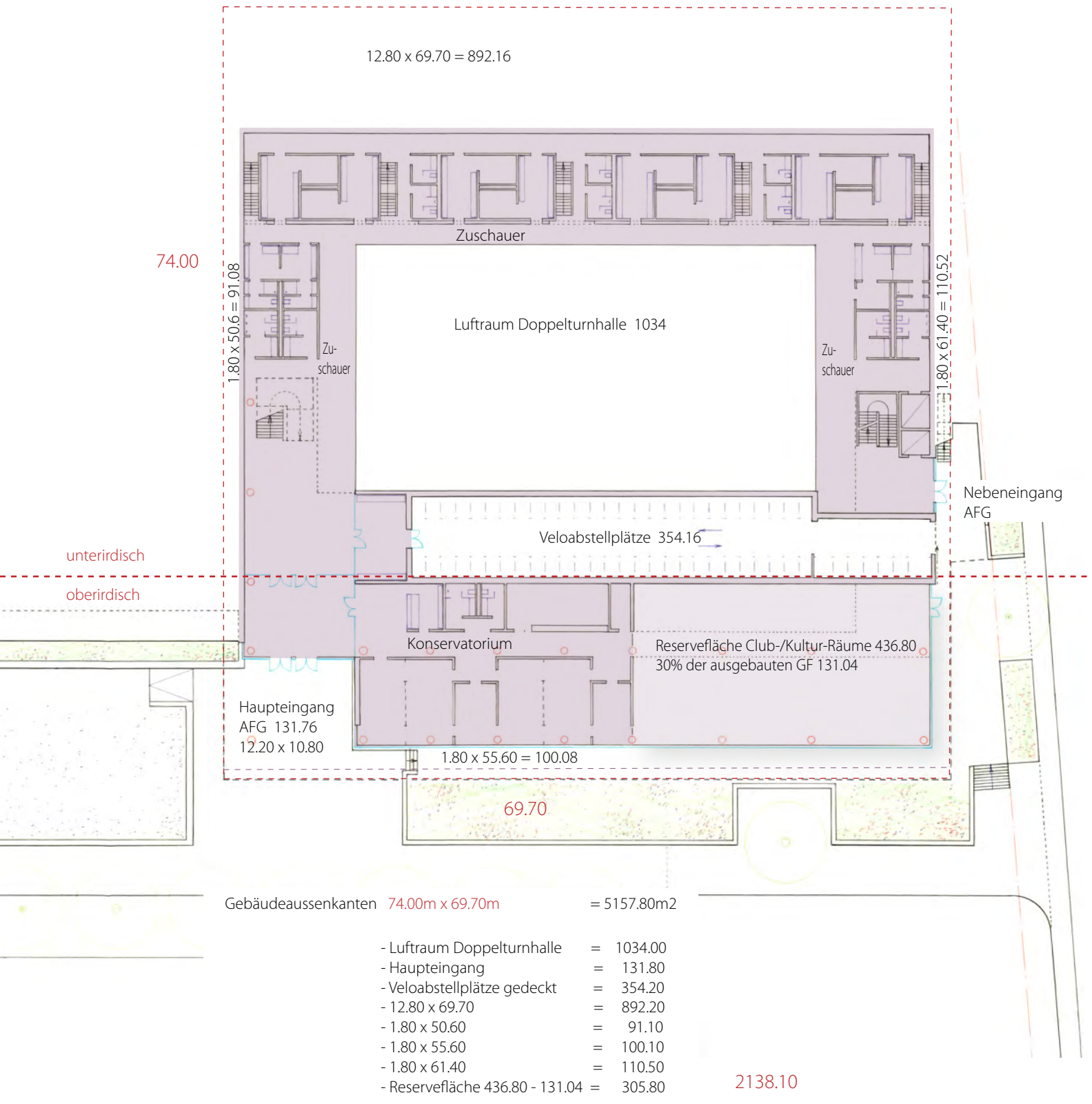


Gebäudeaussenkanten 74.00m x 69.70m = 5157.80m<sup>2</sup>

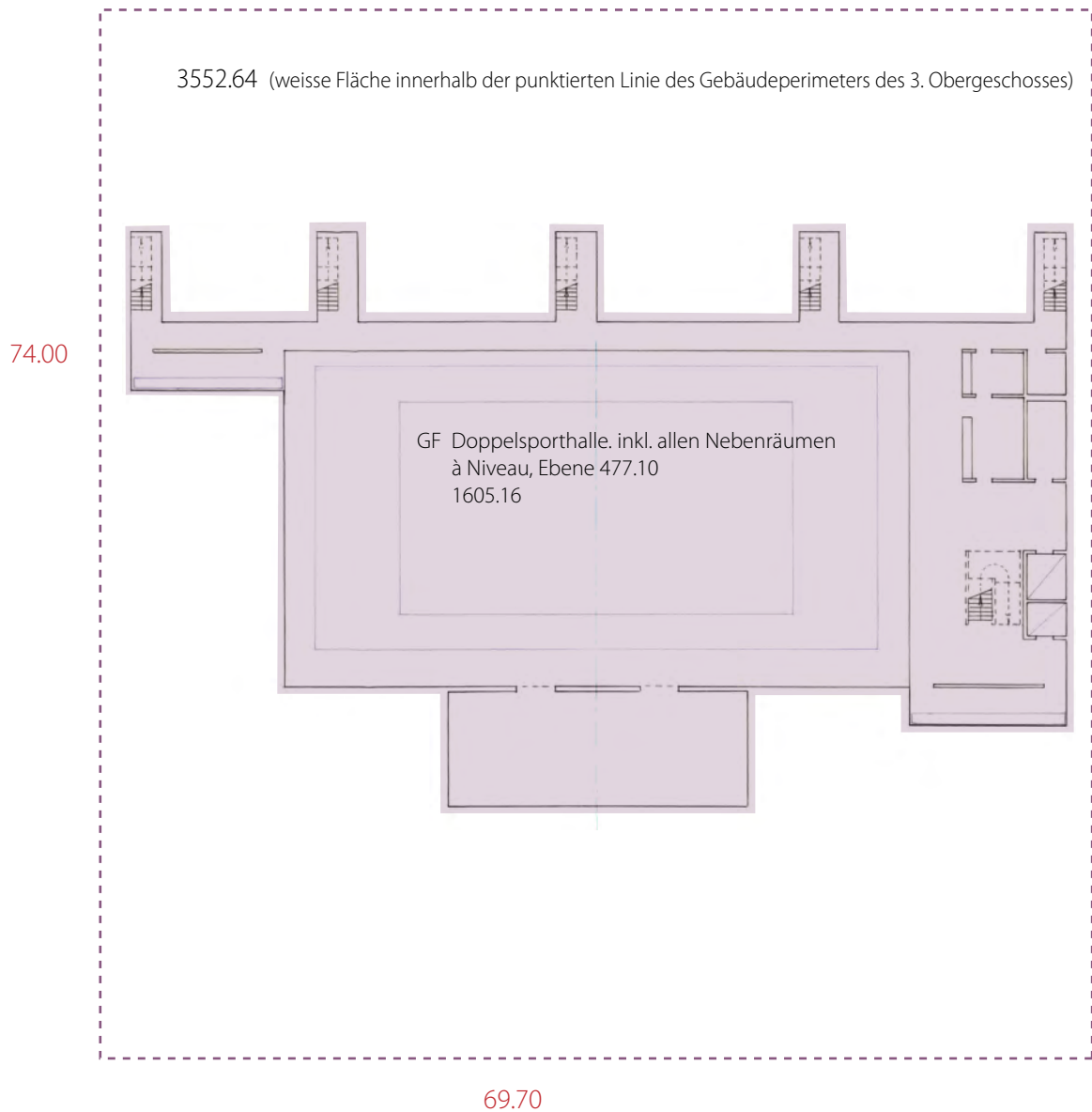
- Luftaum Doppelturhalle	=	1034.00
- Pausenplatz gedeckt	=	540.40
- Parkplätze gedeckt	=	688.60
- Aussengeräteräume	=	133.20
- Anlieferung gedeckt	=	280.30
- LR Treppe	=	19.00
- Terrasse AFG	=	206.30

2256.00m<sup>2</sup>

## GF Erdgeschoss 2138m<sup>2</sup>



GF Untergeschoss 1605.00m<sup>2</sup>



Gebäudeaussenkanten 74.00m x 69.70m = 5157.80m<sup>2</sup>

GF Doppelsporthalle 1605.16m<sup>2</sup>  
(Gesamtfläche UG)

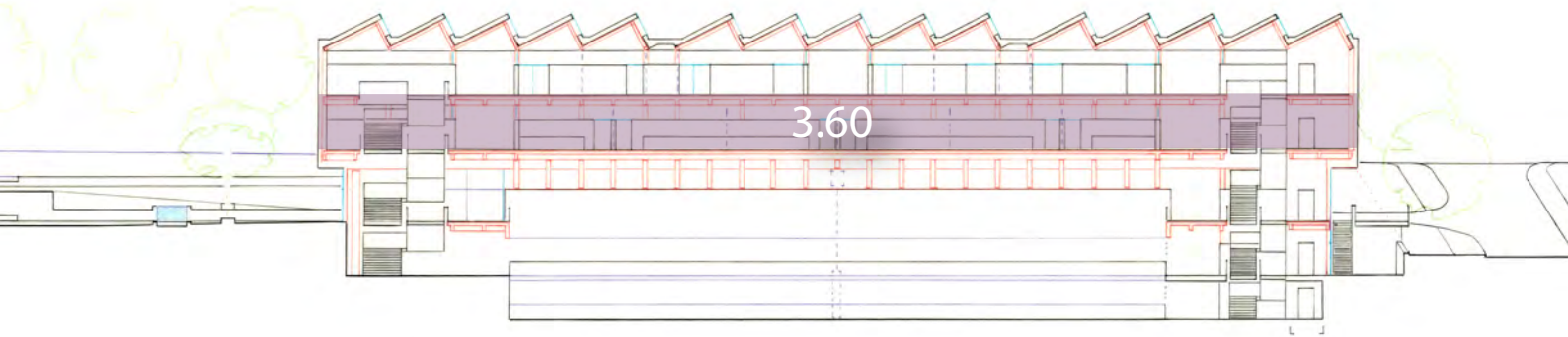
---

Architectural section drawing of a building with a sawtooth roof. The drawing shows the internal structure, including the roof trusses and floor slabs. A dimension of 4.20 is indicated across the width of the building. The drawing is color-coded, with the roof structure in purple, the floor slabs in red, and the walls in blue. The building is shown in cross-section, revealing the internal layout and structural elements.

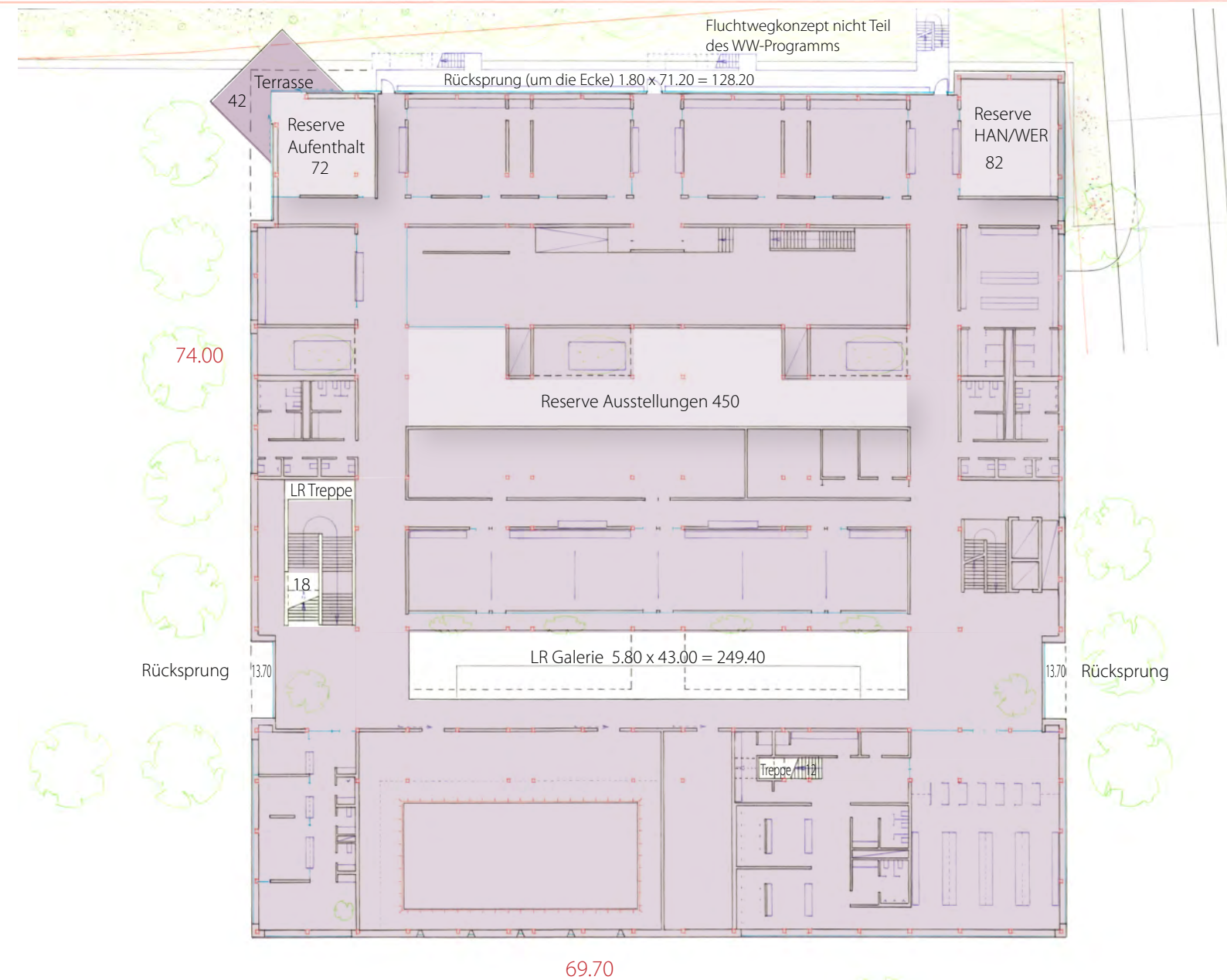




GV 2. Obergeschoss GF 4542m<sup>2</sup> x 3.60m = 16351.20

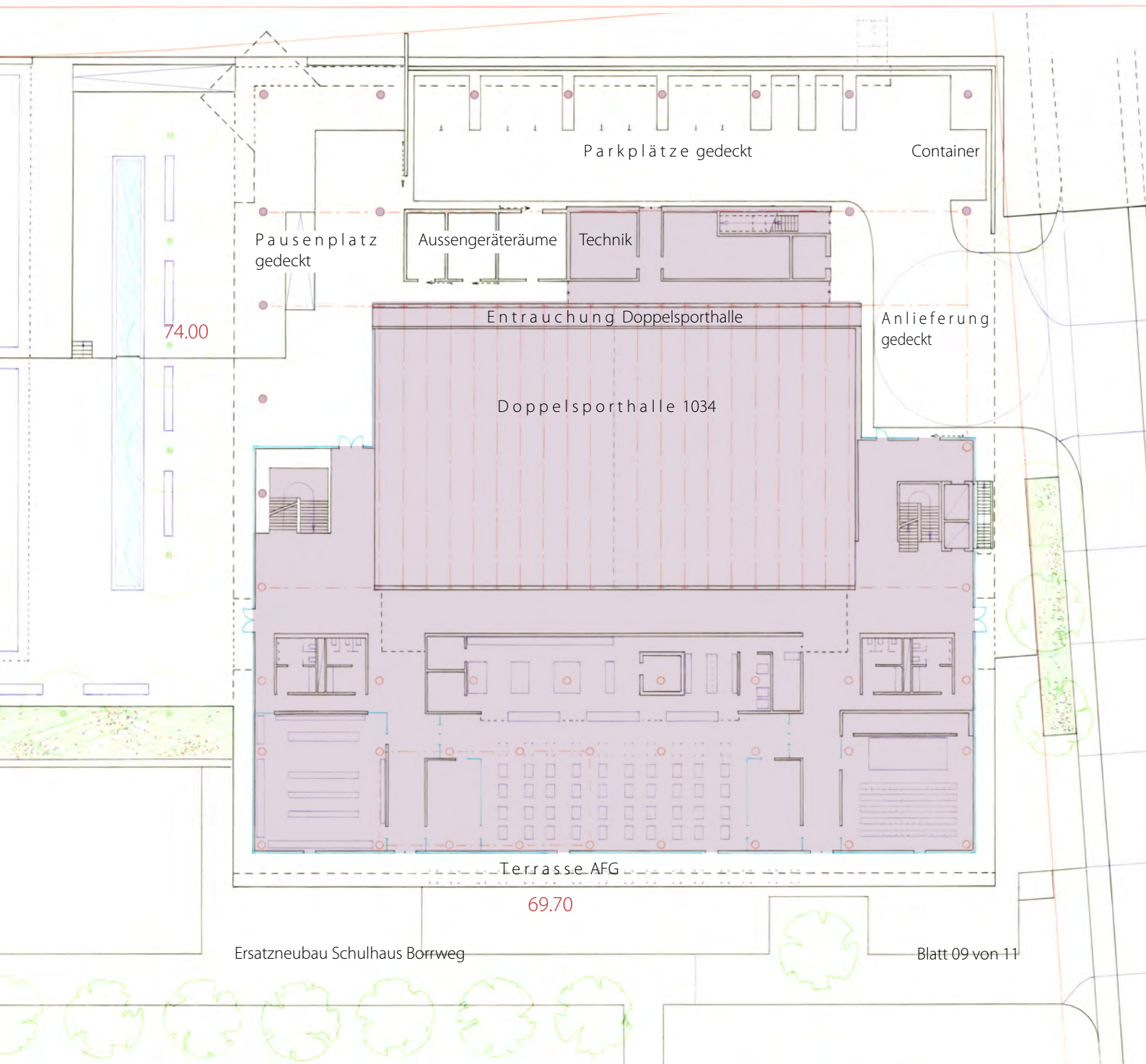
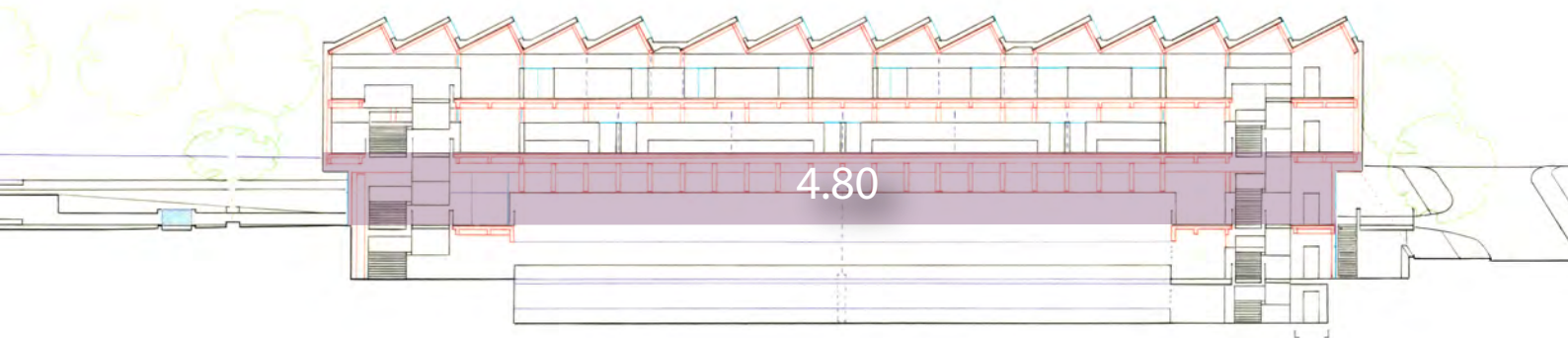


GF 2. Obergeschoss 4542m<sup>2</sup>

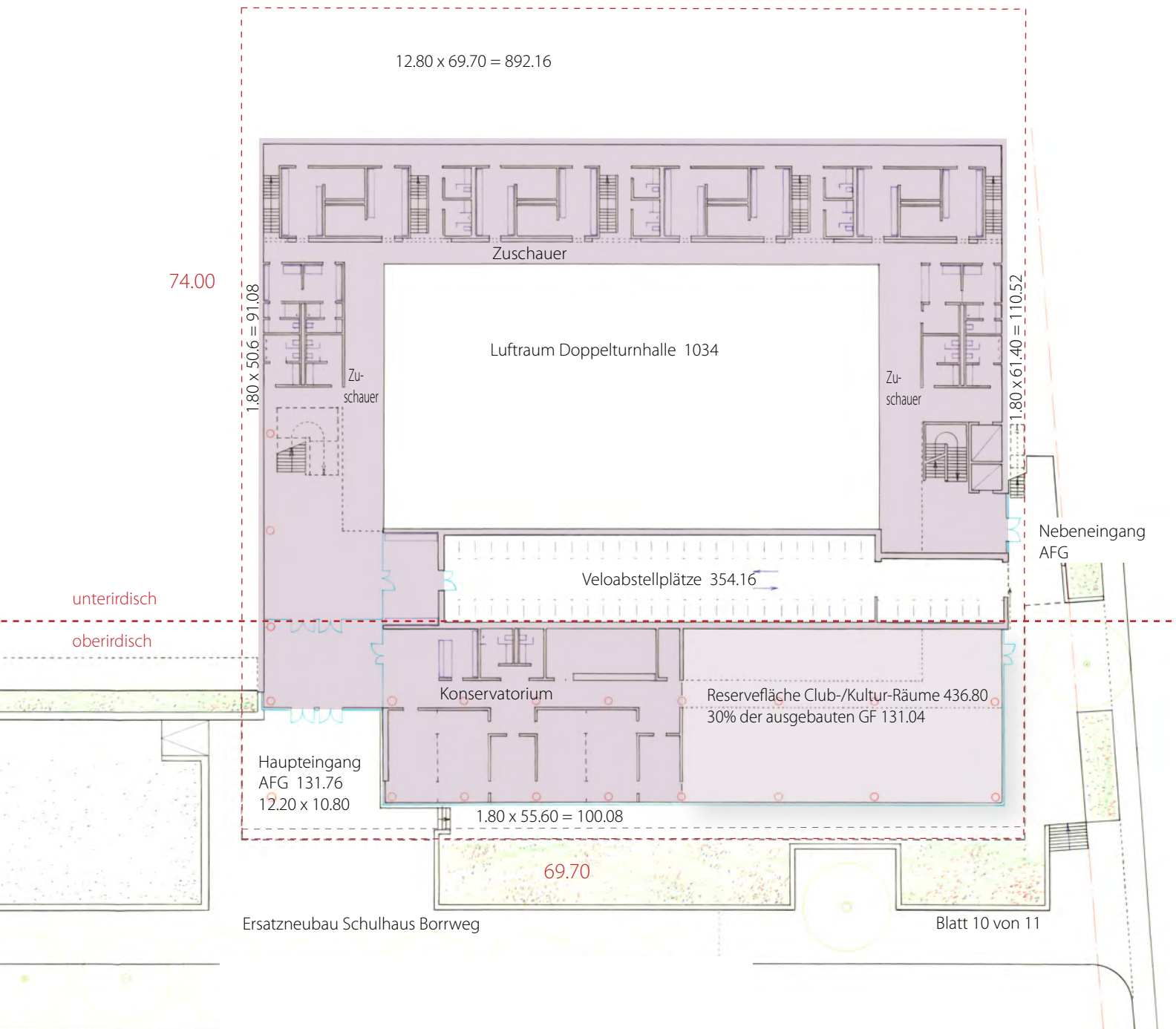
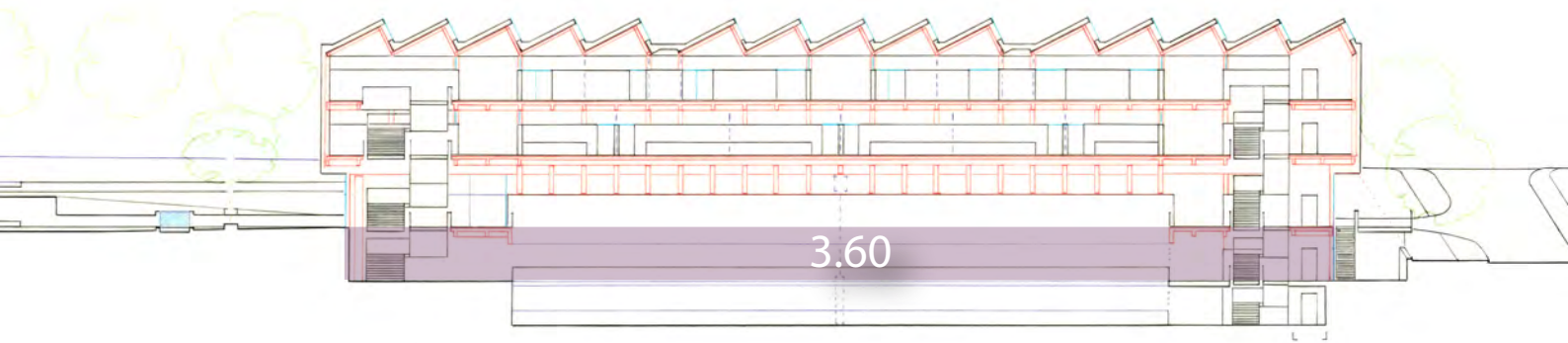




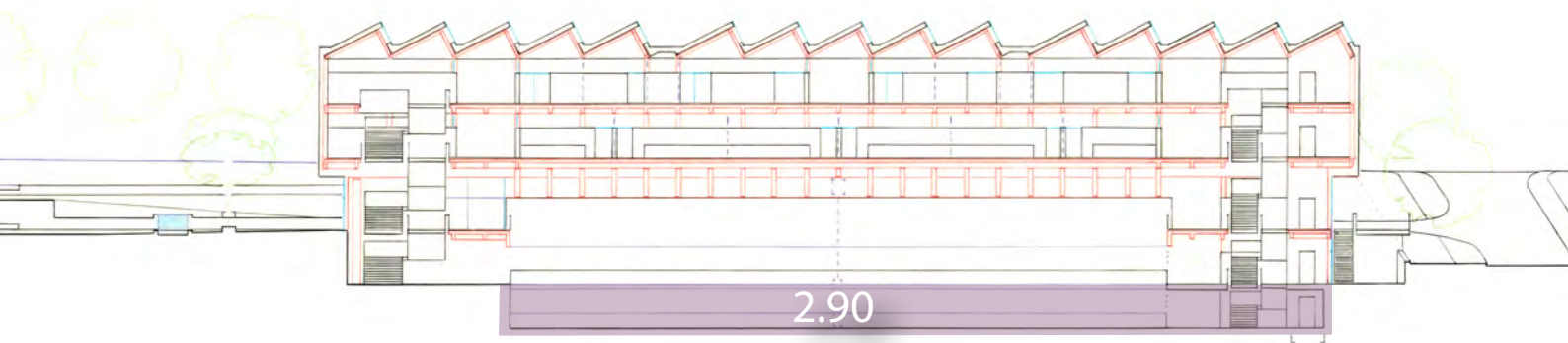
GV 1. Obergeschoss GF 2256.00m<sup>2</sup> + 1034 (Sporthalle) = 3290.00m<sup>2</sup> x 4.80m = 15792.00m<sup>3</sup>



GV Erdgeschoss GF 2138m<sup>2</sup> (unterirdisch 1605.00m<sup>2</sup>, oberirdisch 533.10m<sup>2</sup>) x 2.90m = 1919.16

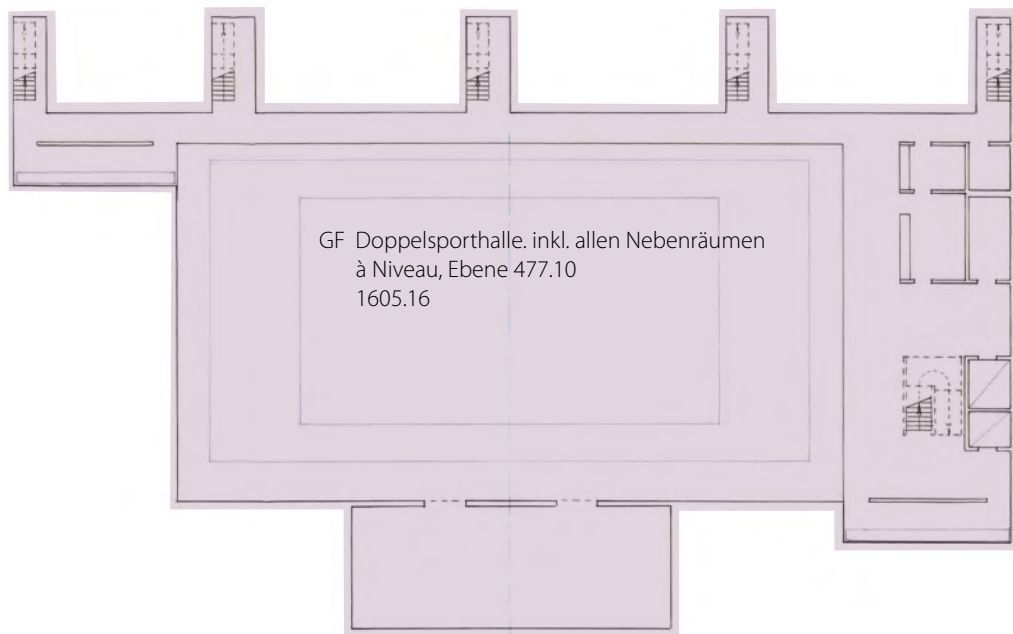


GV Untergeschoss GF 1605.00m<sup>2</sup> x 2.90m = 4654.50m<sup>3</sup>



3552.64 (weisse Fläche innerhalb der punktierten Linie des Gebäudeperimeters des 3. Obergeschosses)

74.00



69.70