

Total Geschossfläche GF 9890m²

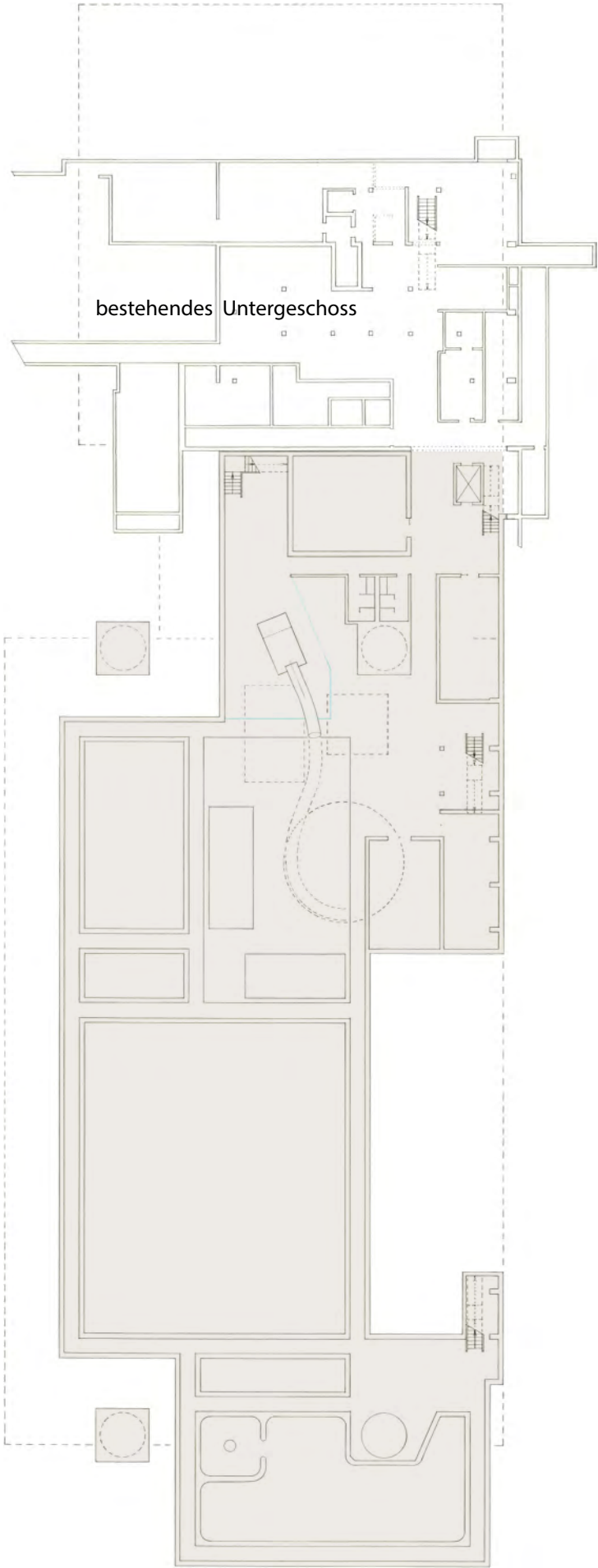
2. Obergeschoss 2'740m²
1. Obergeschoss 1'375m²
Erdgeschoss 3'305m²
Untergeschoss 2'470m²

Total Gebäudevolumen GV 36'685

Badehalle 24'765m³
Garderoben 8'550m³
Restaurant 3'370m³

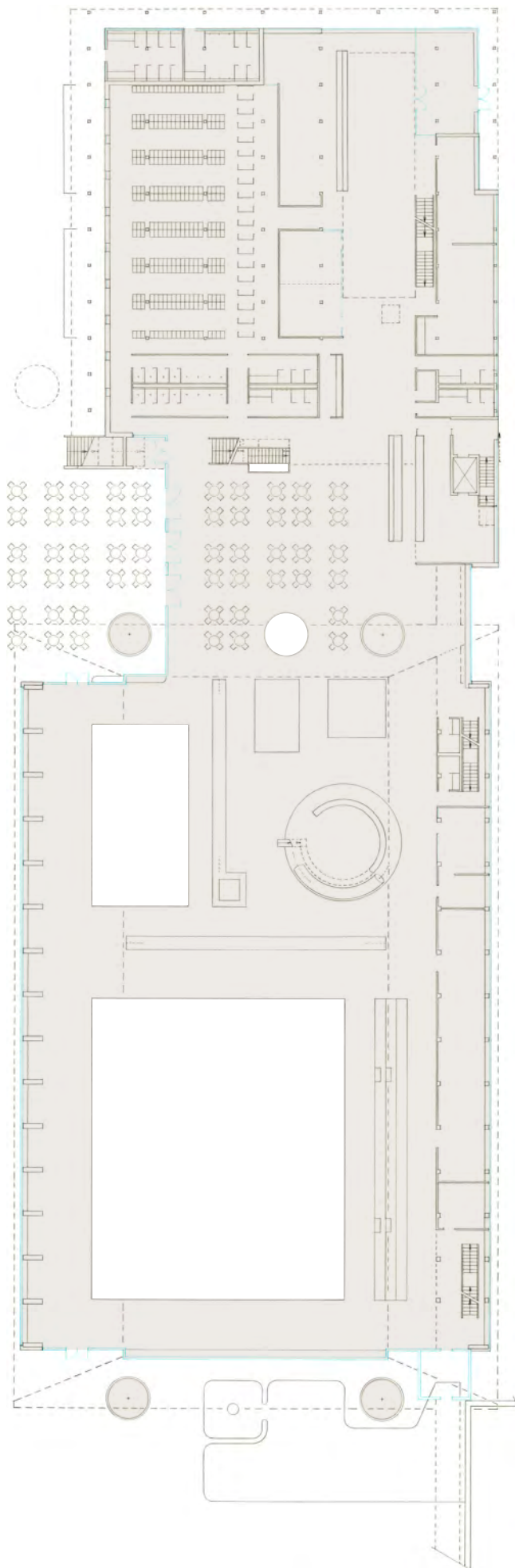
GF Untergeschoss 403.90 / 402.40

Total GF UG: 2'470



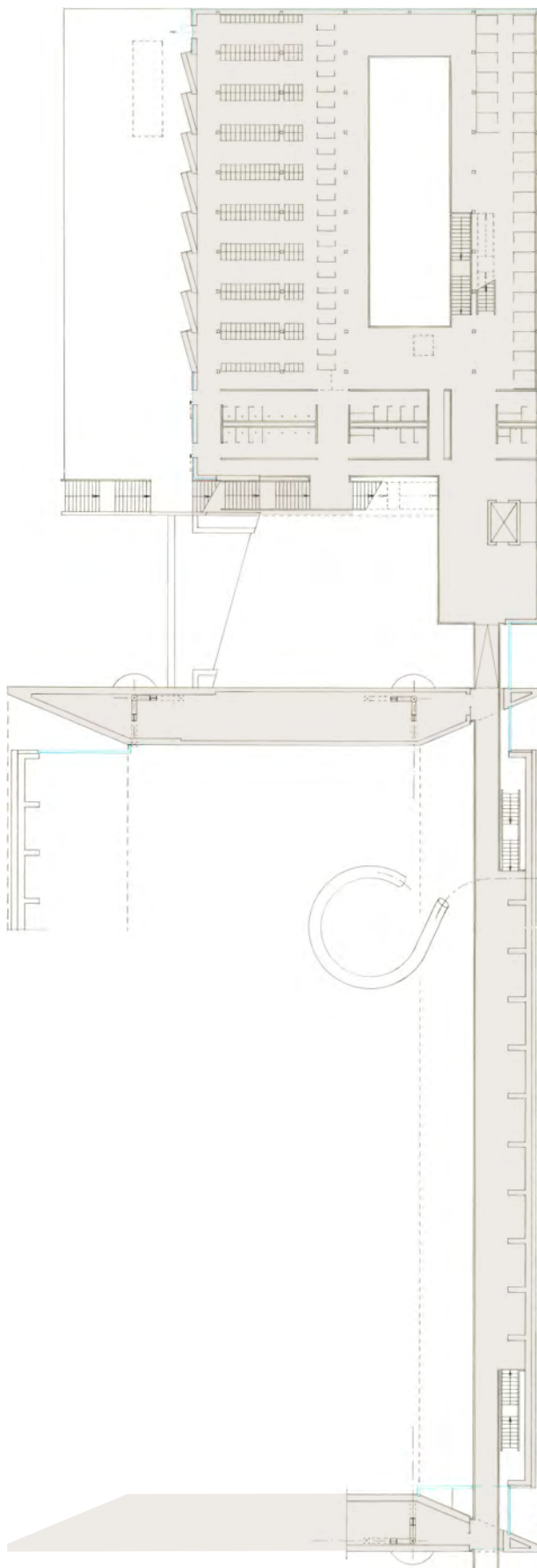
GF Erdgeschoss 407.20

Total GF EG: 3'305



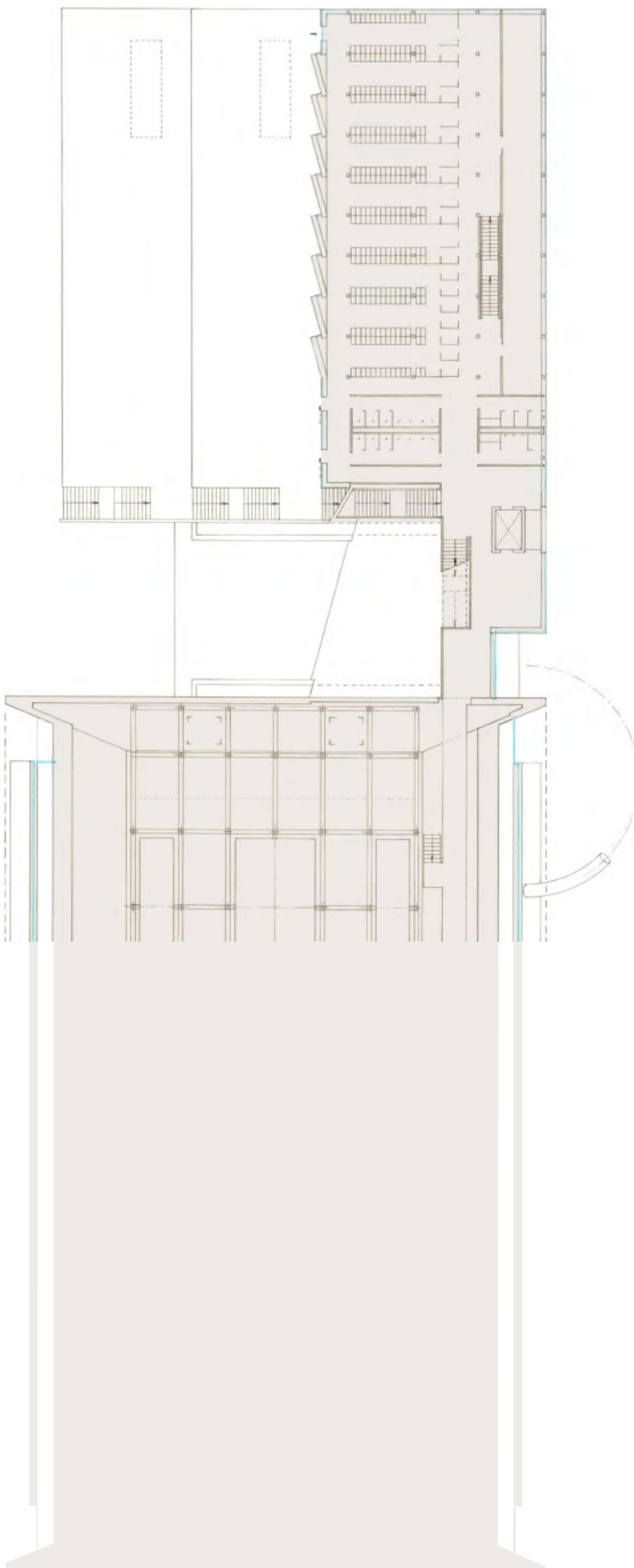
GF 1. Obergeschoss 410.86 / 410.20

Total GF 1.OG: 1'375

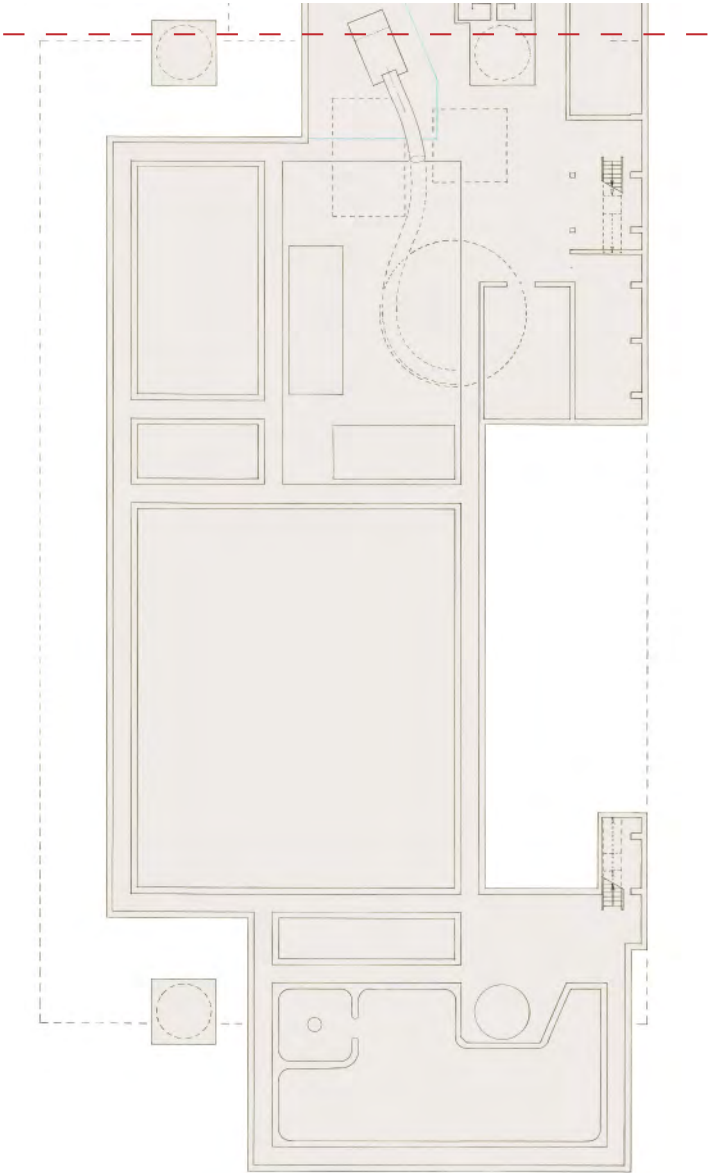
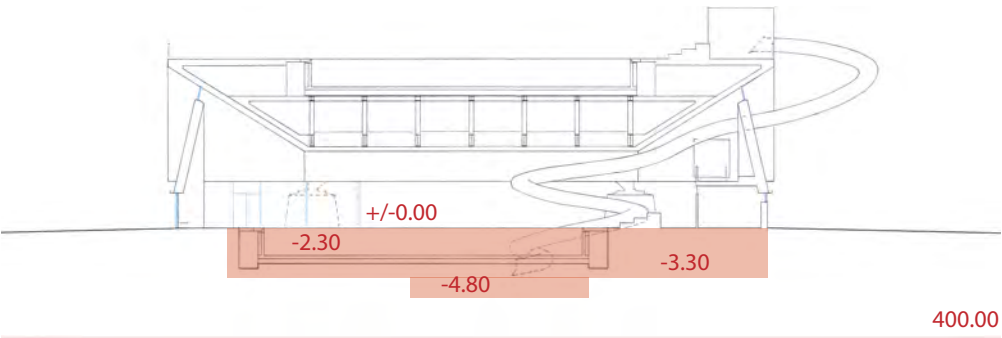


GF 2. Obergeschoss 414.53

Total GF 2.OG: 2'740

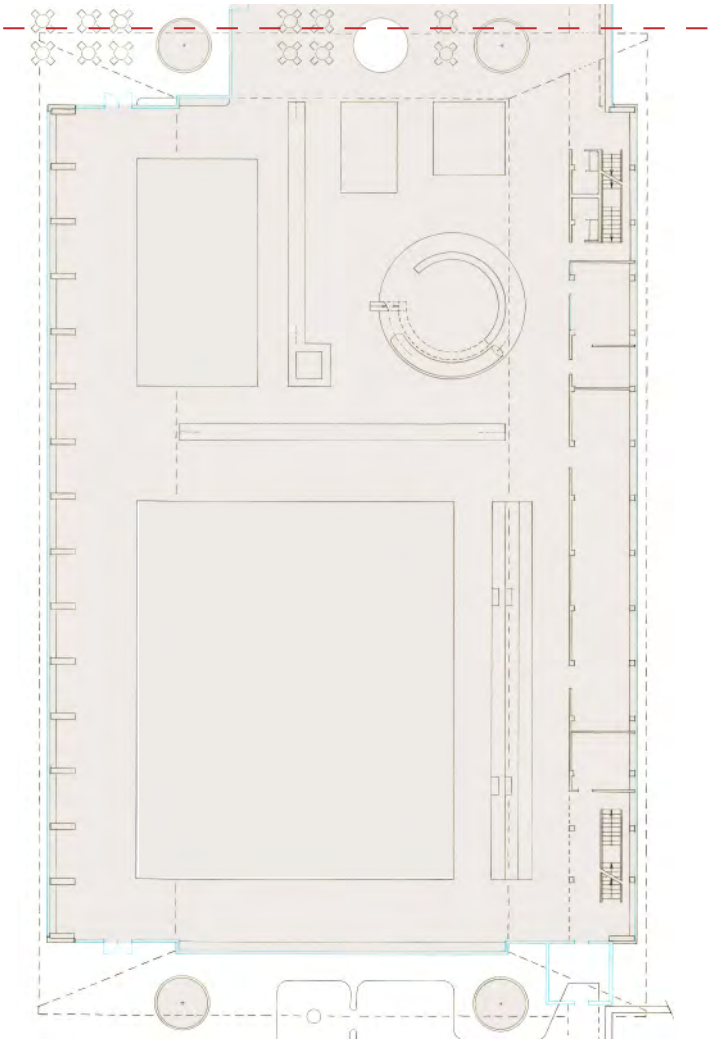
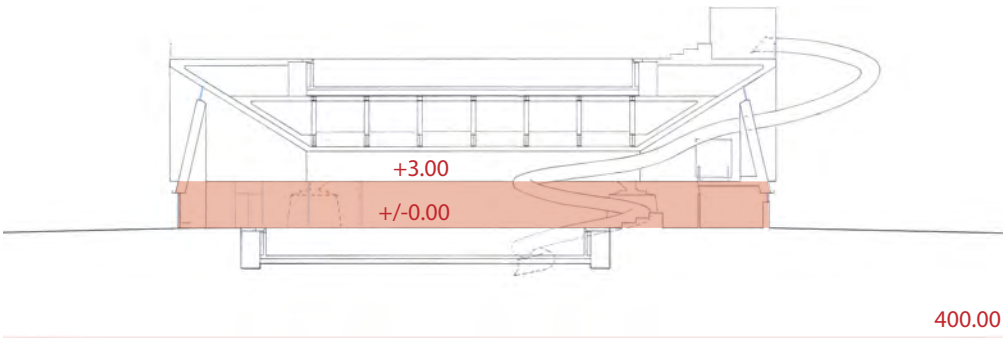


Total GV UG: 6'955

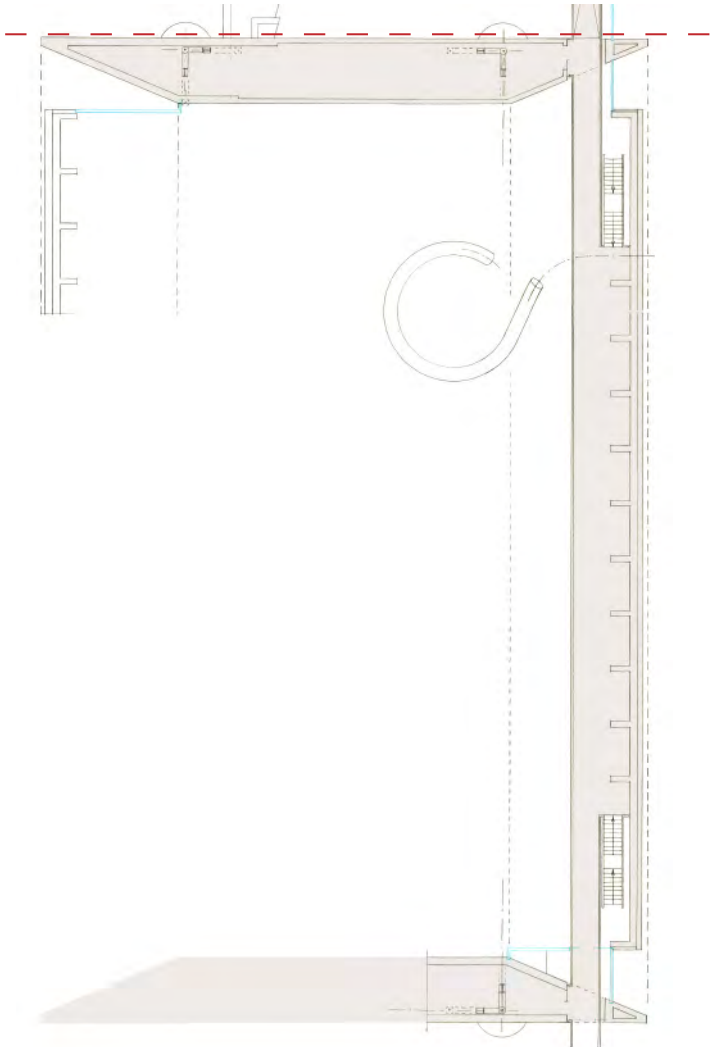
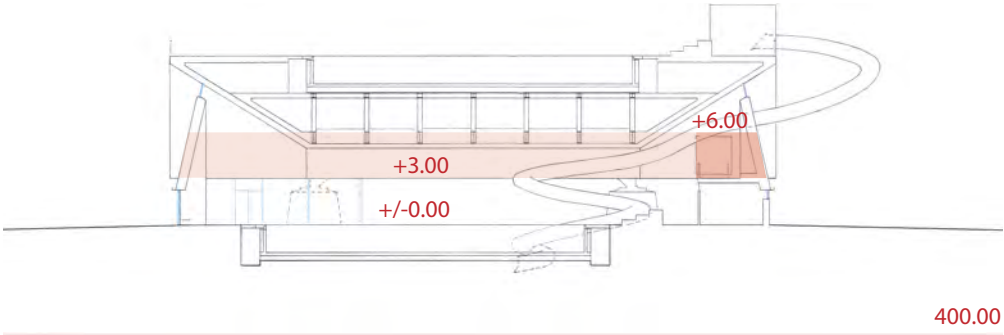


GV Badehalle Erdgeschoss

Total GV EG: 6835

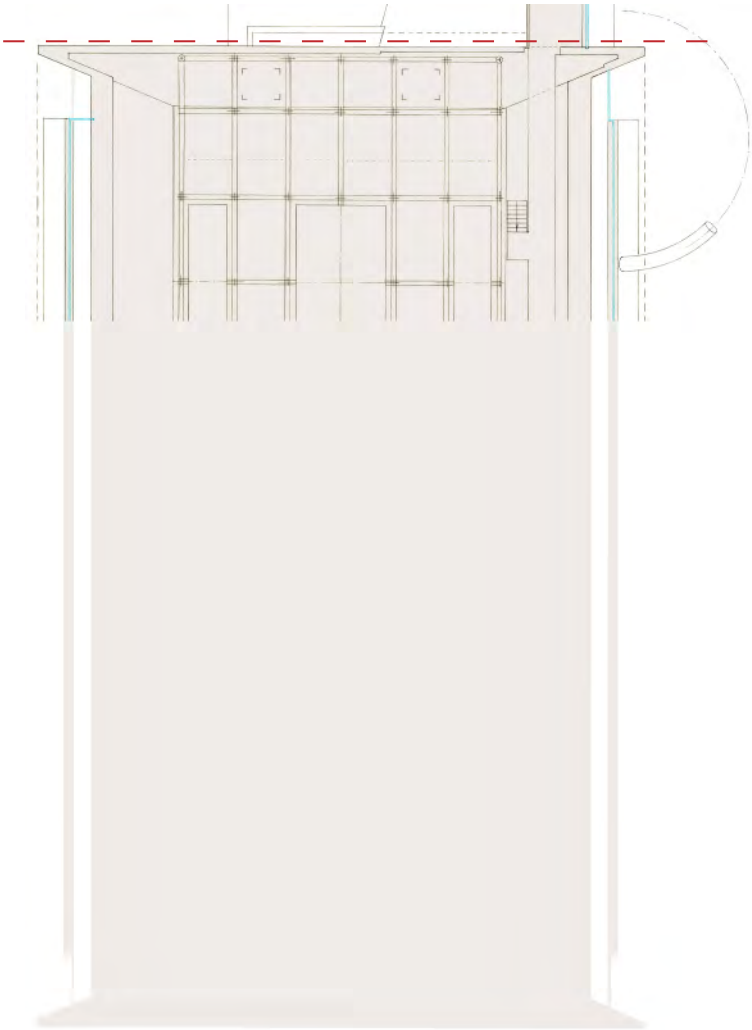
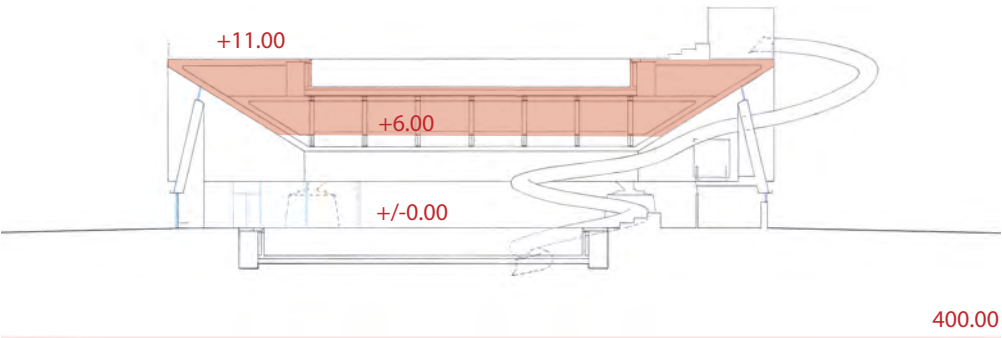


Total GV 1. OG: 1'705



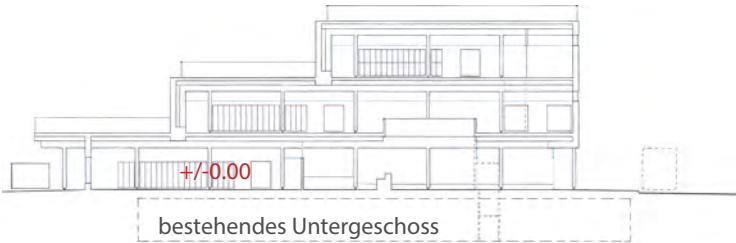
GV Badehalle 2.Obergeschoss

Total GV 2. OG: 9'270

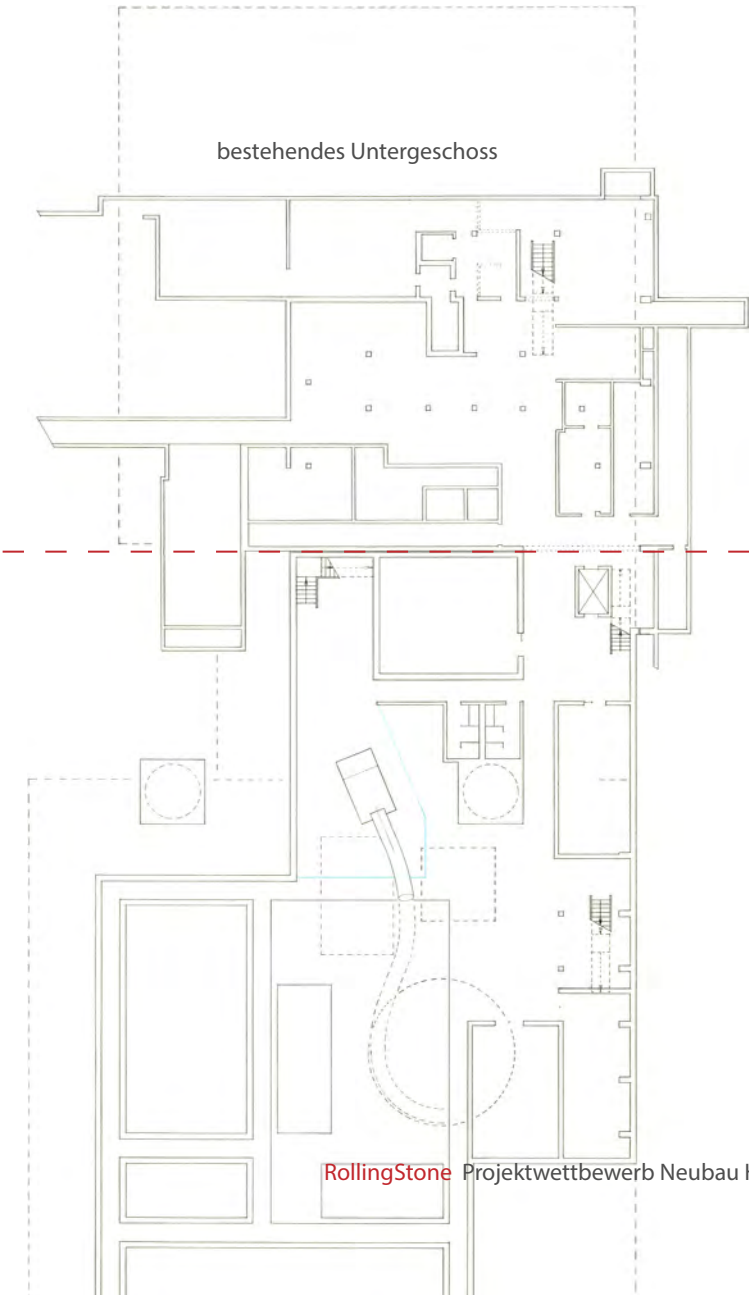


GV Garderoben Untergeschoss

Total GV UG: 0.00

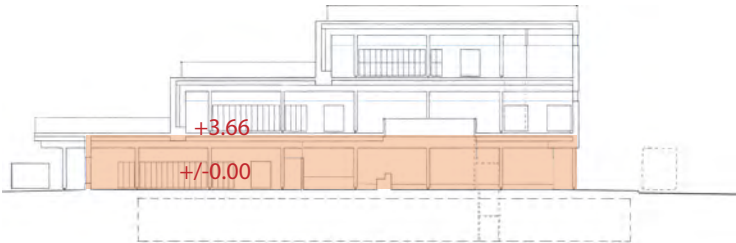


400.00

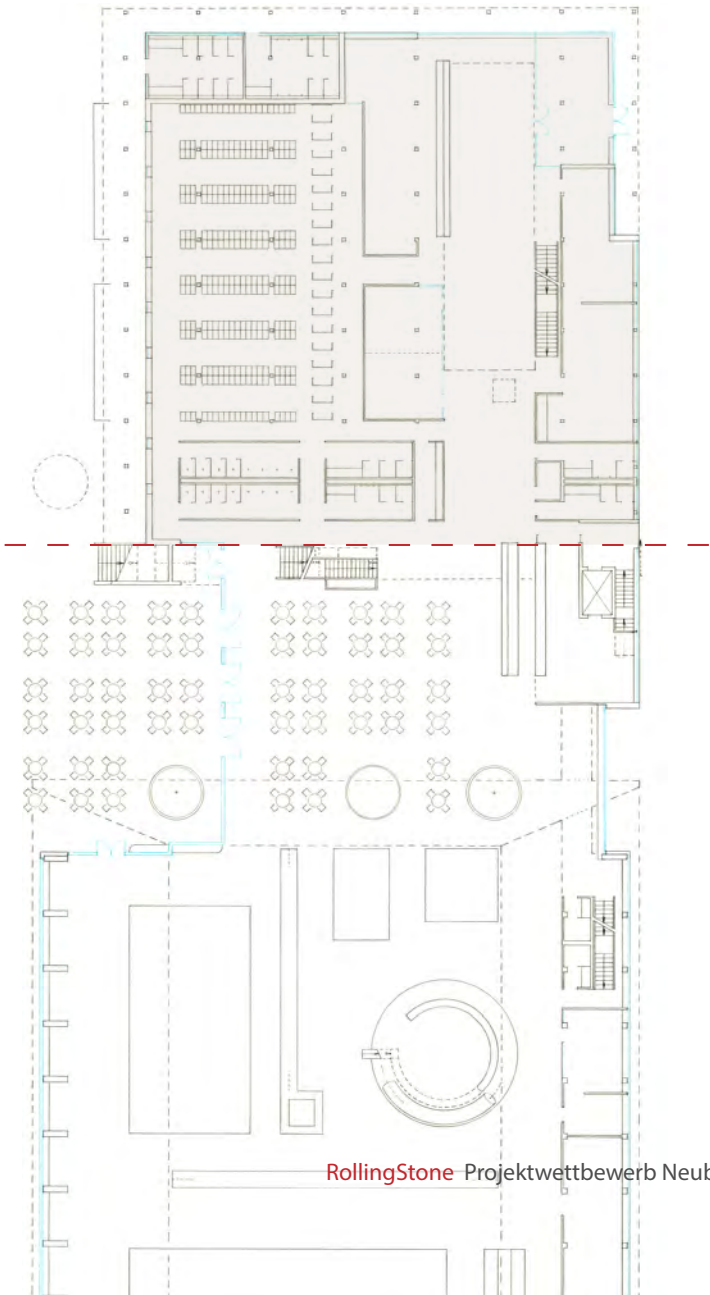


GV Garderoben Erdgeschoss

Total GV EG: 3'960



400.00

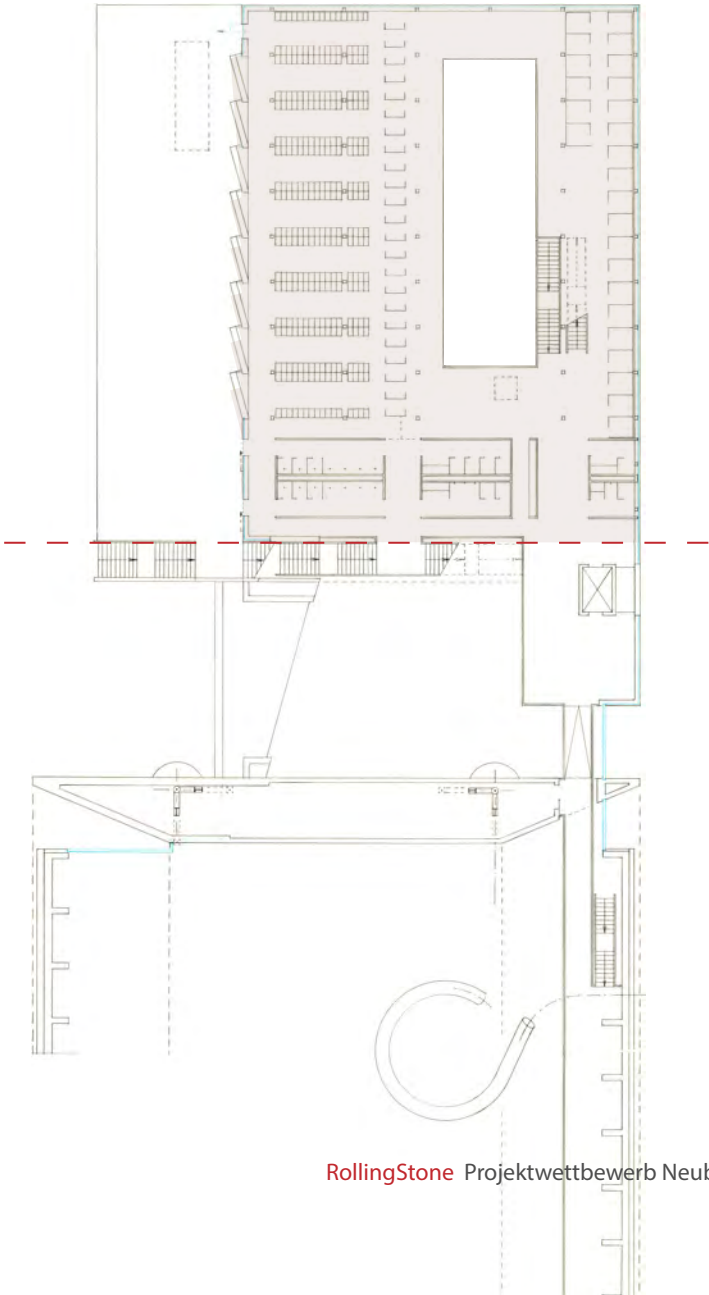


GV Garderoben I. Obergeschoss

Total GV 1.OG: 3'000

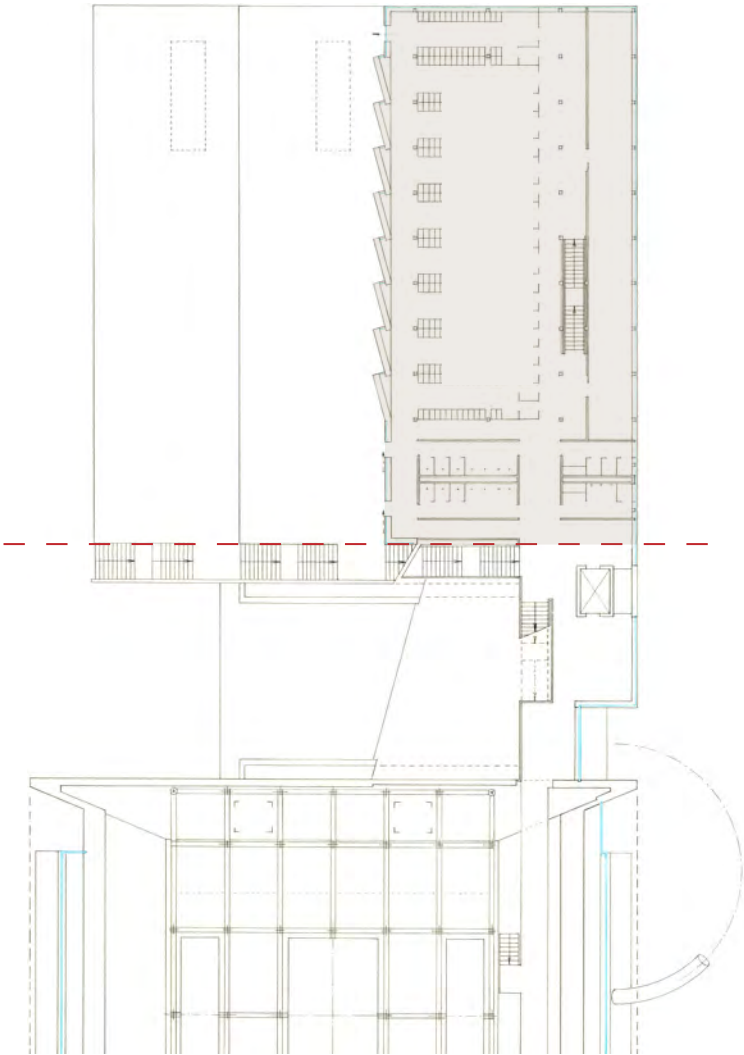
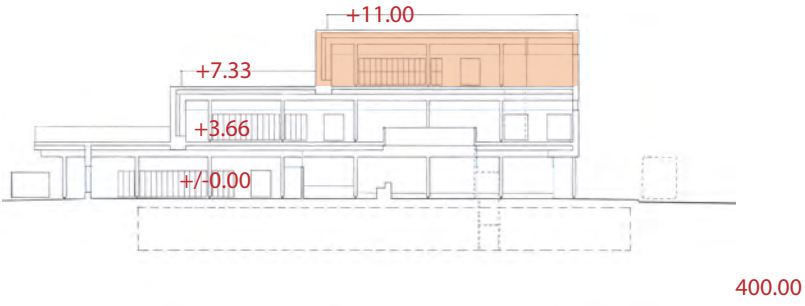


400.00

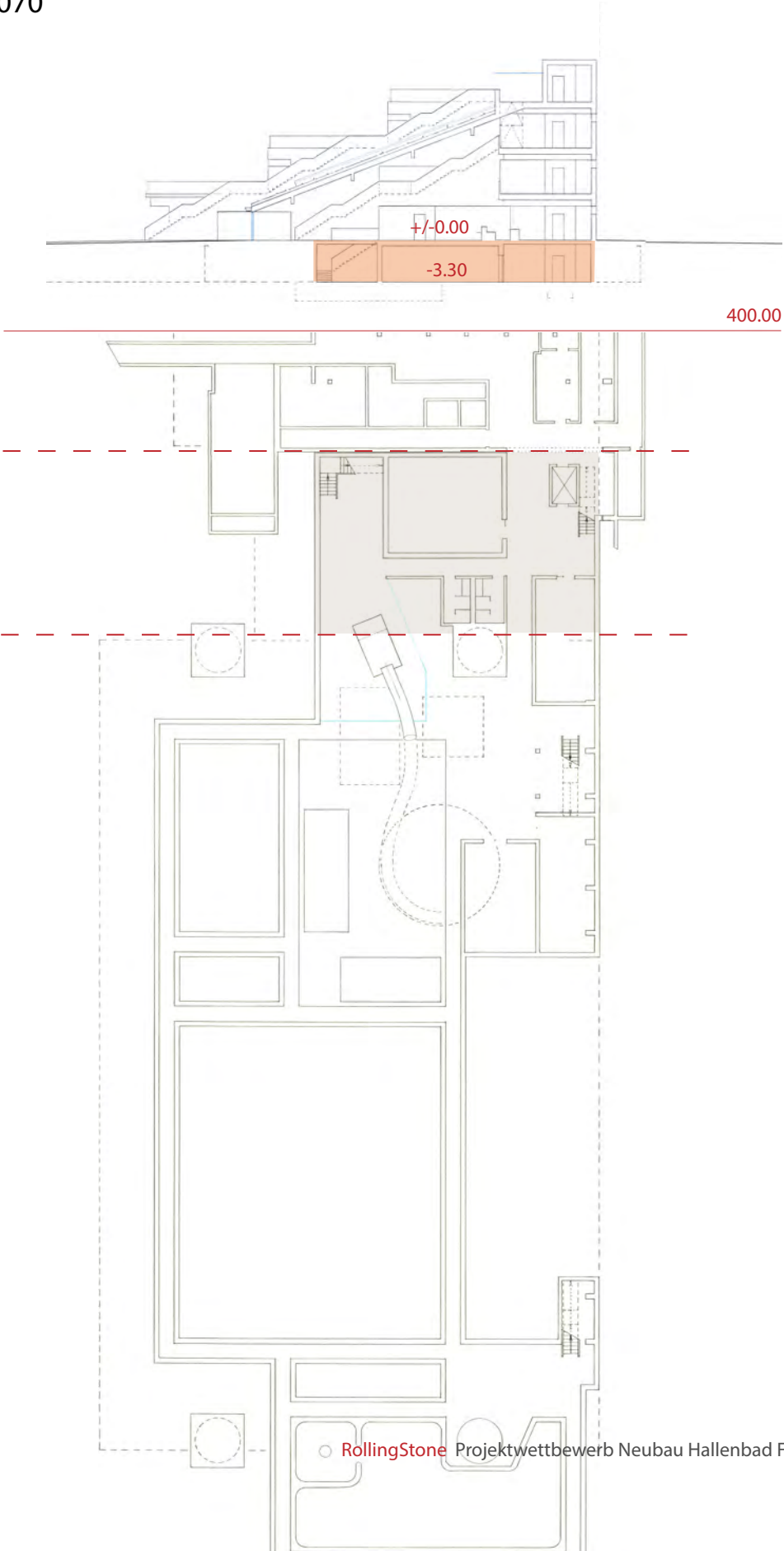


GV Garderoben 2. Obergeschoss

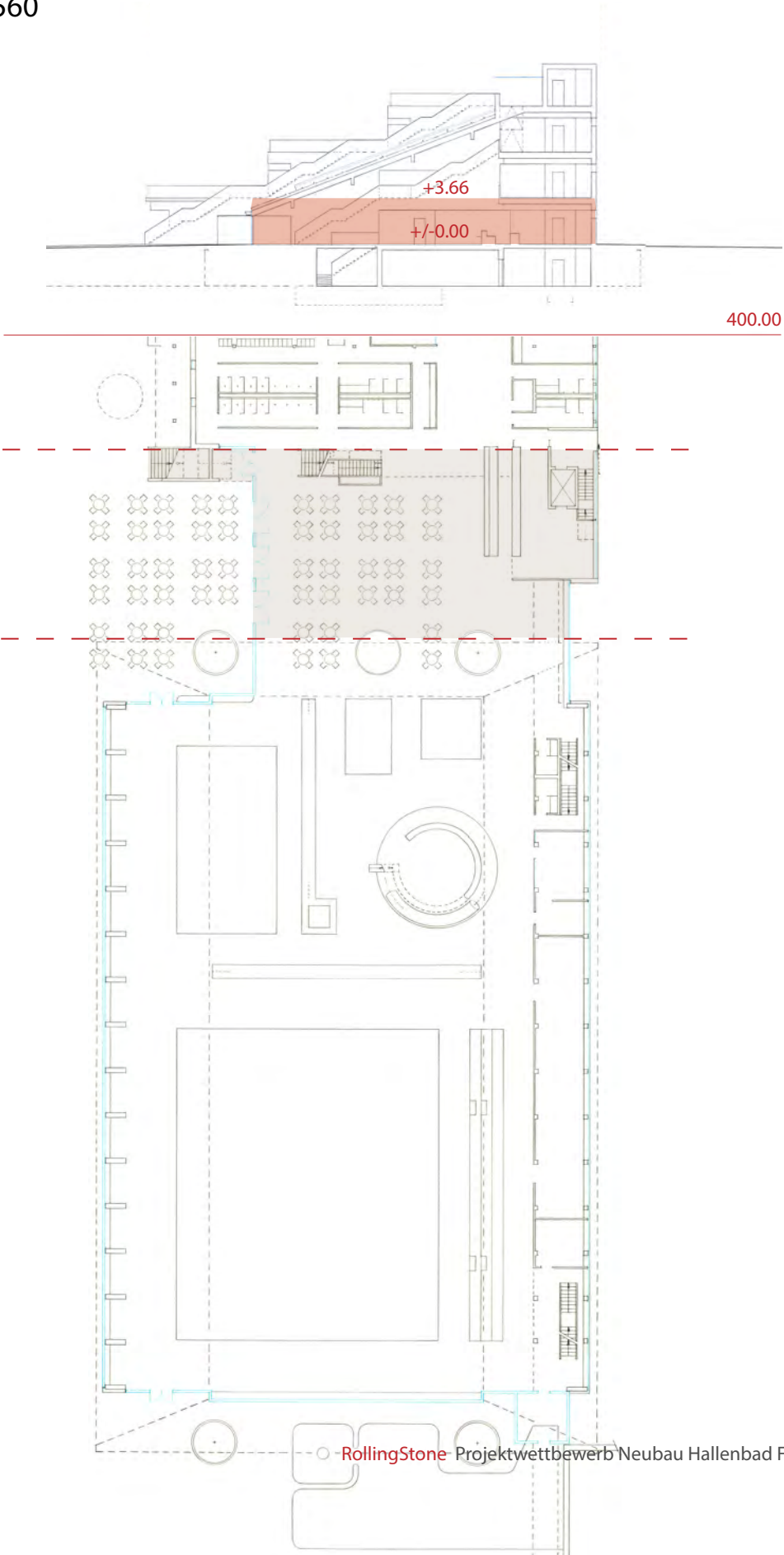
Total GV 2.OG: 1'590



Total GV UG: 1'070

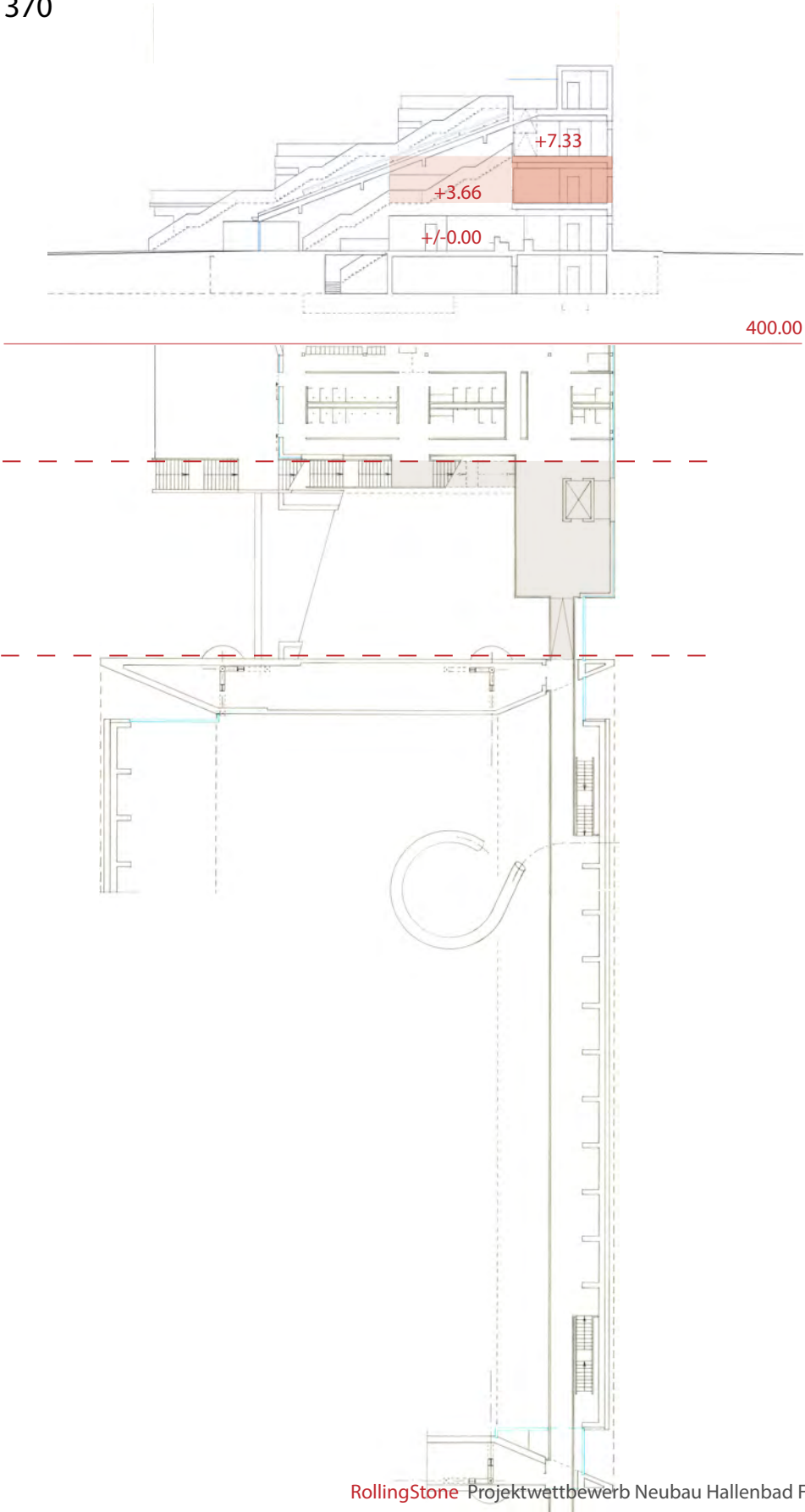


Total GV EG: 1'560



GV Restaurant 1. Obergeschoss

Total GV 1. OG: 370



GV Restaurant 2. Obergeschoss

Total GV 2. OG: 370

